

Datasheet for ABIN634681 **anti-ATP2A2 antibody (C-Term)**



[Go to Product page](#)

1 Image

Overview

| | |
|----------------------|---|
| Quantity: | 100 µL |
| Target: | ATP2A2 |
| Binding Specificity: | C-Term |
| Reactivity: | Human, Mouse, Rat, Dog, Drosophila melanogaster |
| Host: | Rabbit |
| Clonality: | Polyclonal |
| Conjugate: | This ATP2A2 antibody is un-conjugated |
| Application: | Western Blotting (WB) |

Product Details

| | |
|---------------|--|
| Immunogen: | ATP2 A2 antibody was raised using the C terminal of ATP2 2 corresponding to a region with amino acids VNLVTDGLPATALGFNPPDLDIMNKPPRNPKEPLISGWLFFRYLAIGCYV |
| Specificity: | ATP2 A2 antibody was raised against the C terminal of ATP2 2 |
| Purification: | Affinity purified |

Target Details

| | |
|-------------------|--|
| Target: | ATP2A2 |
| Alternative Name: | ATP2A2 (ATP2A2 Products) |
| Background: | ATP2A2 is one of the SERCA Ca(2+)-ATPases, which are intracellular pumps located in the sarcoplasmic or endoplasmic reticula of muscle cells. This enzyme catalyzes the hydrolysis of ATP coupled with the translocation of calcium from the cytosol into the sarcoplasmic reticulum |

Target Details

lumen, and is involved in regulation of the contraction/relaxation cycle. Mutations in this gene cause Darier-White disease, also known as keratosis follicularis, an autosomal dominant skin disorder characterized by loss of adhesion between epidermal cells and abnormal keratinization. Alternative splicing results in multiple transcript variants encoding different isoforms.

Molecular Weight: 115 kDa (MW of target protein)

Pathways: [Myometrial Relaxation and Contraction](#), [ER-Nucleus Signaling](#), [Ribonucleoside Biosynthetic Process](#)

Application Details

Application Notes: WB: 1 µg/mL
Optimal conditions should be determined by the investigator.

Comment: ATP2A2 Blocking Peptide, catalog no. 33R-9709, is also available for use as a blocking control in assays to test for specificity of this ATP2A2 antibody

Restrictions: For Research Use only

Handling

Format: Lyophilized

Reconstitution: Lyophilized powder. Add distilled water for a 1 mg/mL concentration of ATP0 2 antibody in PBS

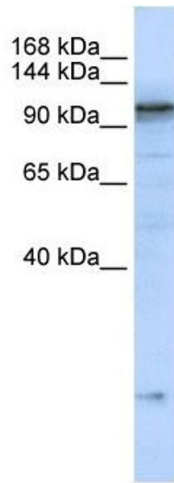
Concentration: Lot specific

Buffer: PBS

Handling Advice: Avoid repeated freeze/thaw cycles.
Dilute only prior to immediate use.

Storage: 4 °C/-20 °C

Storage Comment: Store at 2-8 °C for short periods. For longer periods of storage, store at -20 °C.



Western Blotting

Image 1. ATP2A2 antibody used at 1 ug/ml to detect target protein.