

Datasheet for ABIN634691
anti-LSAMP antibody (N-Term)



[Go to Product page](#)

1 Image

Overview

Quantity:	100 µL
Target:	LSAMP
Binding Specificity:	N-Term
Reactivity:	Human, Mouse, Rat
Host:	Rabbit
Clonality:	Polyclonal
Conjugate:	This LSAMP antibody is un-conjugated
Application:	Western Blotting (WB)

Product Details

Immunogen:	LSAMP antibody was raised using the N terminal of LSAMP corresponding to a region with amino acids MVRRVQPDRKQLPLVLLRLLCLLPTGLPVRSDVDFNRTDNITVRQGDTAI
Specificity:	LSAMP antibody was raised against the N terminal of LSAMP
Purification:	Affinity purified

Target Details

Target:	LSAMP
Alternative Name:	LSAMP (LSAMP Products)
Background:	LSAMP is a neuronal surface glycoprotein found in cortical and subcortical regions of the limbic system. During development of the limbic system, this protein is found on the surface of axonal membranes and growth cones, where it acts as a selective homophilic adhesion molecule, and

Target Details

guides the development of specific patterns of neuronal connections.

Molecular Weight: 37 kDa (MW of target protein)

Application Details

Application Notes: WB: 1 µg/mL

Optimal conditions should be determined by the investigator.

Comment: LSAMP Blocking Peptide, catalog no. 33R-6605, is also available for use as a blocking control in assays to test for specificity of this LSAMP antibody

Restrictions: For Research Use only

Handling

Format: Lyophilized

Reconstitution: Lyophilized powder. Add distilled water for a 1 mg/mL concentration of LSAMP antibody in PBS

Concentration: Lot specific

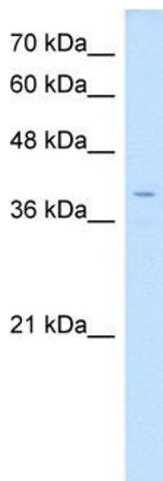
Buffer: PBS

Handling Advice: Avoid repeated freeze/thaw cycles.
Dilute only prior to immediate use.

Storage: 4 °C/-20 °C

Storage Comment: Store at 2-8 °C for short periods. For longer periods of storage, store at -20 °C.

Images



Western Blotting

Image 1. LSAMP antibody used at 1 µg/ml to detect target protein.