

Datasheet for ABIN634699
anti-DGCR2 antibody (Middle Region)



[Go to Product page](#)

1 Image

Overview

Quantity:	100 µL
Target:	DGCR2 (DGS2)
Binding Specificity:	Middle Region
Reactivity:	Human, Mouse, Rat
Host:	Rabbit
Clonality:	Polyclonal
Conjugate:	This DGCR2 antibody is un-conjugated
Application:	Western Blotting (WB)

Product Details

Immunogen:	DGCR2 antibody was raised using the middle region of DGCR2 corresponding to a region with amino acids AESCYEKSSFLCKRSQTCVDIKDNVVDEGFYFTPKGDDPCLSCTCHGGEP
Specificity:	DGCR2 antibody was raised against the middle region of DGCR2
Purification:	Affinity purified

Target Details

Target:	DGCR2 (DGS2)
Alternative Name:	DGCR2 (DGS2 Products)
Background:	Deletions of the 22q11.2 have been associated with a wide range of developmental defects classified under the acronym CATCH 22. The DGCR2 is a novel putative adhesion receptor protein, which could play a role in neural crest cells migration, a process which has been

Target Details

proposed to be altered in DiGeorge syndrome.

Molecular Weight: 61 kDa (MW of target protein)

Application Details

Application Notes: WB: 1 µg/mL

Optimal conditions should be determined by the investigator.

Comment: DGCR2 Blocking Peptide, catalog no. 33R-1148, is also available for use as a blocking control in assays to test for specificity of this DGCR2 antibody

Restrictions: For Research Use only

Handling

Format: Lyophilized

Reconstitution: Lyophilized powder. Add distilled water for a 1 mg/mL concentration of DGCR2 antibody in PBS

Concentration: Lot specific

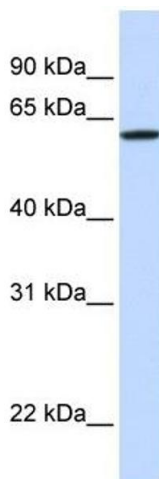
Buffer: PBS

Handling Advice: Avoid repeated freeze/thaw cycles.
Dilute only prior to immediate use.

Storage: 4 °C/-20 °C

Storage Comment: Store at 2-8 °C for short periods. For longer periods of storage, store at -20 °C.

Images



Western Blotting

Image 1. DGCR2 antibody used at 1 µg/ml to detect target protein.