

Datasheet for ABIN634703 **anti-Cadherin 12 antibody**



[Go to Product page](#)

1 Image

Overview

Quantity:	100 µL
Target:	Cadherin 12
Reactivity:	Human, Rat, Mouse
Host:	Rabbit
Clonality:	Polyclonal
Conjugate:	This Cadherin 12 antibody is un-conjugated
Application:	Western Blotting (WB)

Product Details

Immunogen:	CDH12 antibody was raised using a synthetic peptide corresponding to a region with amino acids DTQEGVIKLLKPLDFETKKAYTFKVEASNLHLDHRFHSAGPFKDTATVKI
Purification:	Affinity purified

Target Details

Target:	Cadherin 12
Alternative Name:	CDH12 (Cadherin 12 Products)
Background:	CDH12 belongs to the protocadherin protein family, a subfamily of the cadherin superfamily. It consists of an extracellular domain containing 6 cadherin repeats, a transmembrane domain and a cytoplasmic tail that differs from those of the classical cadherins. The function of this cellular adhesion protein is undetermined but mouse protocadherin 12 does not bind catenins and appears to have no affect on cell migration or growth.

Target Details

Molecular Weight: 82 kDa (MW of target protein)

Application Details

Application Notes: WB: 1 µg/mL
Optimal conditions should be determined by the investigator.

Comment: CDH12 Blocking Peptide, catalog no. 33R-2203, is also available for use as a blocking control in assays to test for specificity of this CDH12 antibody

Restrictions: For Research Use only

Handling

Format: Lyophilized

Reconstitution: Lyophilized powder. Add distilled water for a 1 mg/mL concentration of CDH12 antibody in PBS

Concentration: Lot specific

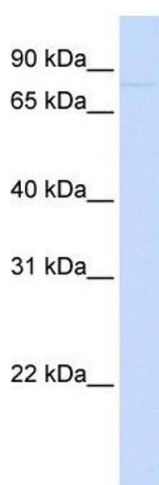
Buffer: PBS

Handling Advice: Avoid repeated freeze/thaw cycles.

Storage: 4 °C/-20 °C

Storage Comment: Store at 2-8 °C for short periods. For longer periods of storage, store at -20 °C.

Images



Western Blotting

Image 1. CDH12 antibody used at 1 ug/ml to detect target protein.