

Datasheet for ABIN634707
anti-Cadherin 24 antibody (N-Term)



[Go to Product page](#)

1 Image

Overview

Quantity:	100 µL
Target:	Cadherin 24 (CDH24)
Binding Specificity:	N-Term
Reactivity:	Human, Mouse, Rat
Host:	Rabbit
Clonality:	Polyclonal
Conjugate:	This Cadherin 24 antibody is un-conjugated
Application:	Western Blotting (WB)

Product Details

Immunogen:	CDH24 antibody was raised using the N terminal of CDH24 corresponding to a region with amino acids NPPIFPLGPYHATVPEMSNVGTSVIQVTAHDADDPSYGNSAKLVYTVLDG
Specificity:	CDH24 antibody was raised against the N terminal of CDH24
Purification:	Affinity purified

Target Details

Target:	Cadherin 24 (CDH24)
Alternative Name:	CDH24 (CDH24 Products)
Background:	Cadherins are calcium dependent cell adhesion proteins. They preferentially interact with themselves in a homophilic manner in connecting cells, cadherins may thus contribute to the sorting of heterogeneous cell types. Cadherin-24 mediate strong cell-cell adhesion.

Target Details

Molecular Weight: 88 kDa (MW of target protein)

Pathways: [Cell-Cell Junction Organization](#)

Application Details

Application Notes: WB: 1 µg/mL

Optimal conditions should be determined by the investigator.

Comment: CDH24 Blocking Peptide, catalog no. 33R-6825, is also available for use as a blocking control in assays to test for specificity of this CDH24 antibody

Restrictions: For Research Use only

Handling

Format: Lyophilized

Reconstitution: Lyophilized powder. Add distilled water for a 1 mg/mL concentration of CDH24 antibody in PBS

Concentration: Lot specific

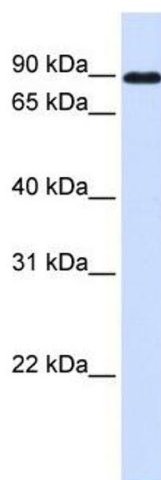
Buffer: PBS

Handling Advice: Avoid repeated freeze/thaw cycles.
Dilute only prior to immediate use.

Storage: 4 °C/-20 °C

Storage Comment: Store at 2-8 °C for short periods. For longer periods of storage, store at -20 °C.

Images



Western Blotting

Image 1. CDH24 antibody used at 1 µg/ml to detect target protein.