

Datasheet for ABIN634708
anti-MPZL2 antibody (N-Term)



[Go to Product page](#)

1 Image

Overview

Quantity:	100 µL
Target:	MPZL2
Binding Specificity:	N-Term
Reactivity:	Human, Mouse, Rat
Host:	Rabbit
Clonality:	Polyclonal
Conjugate:	This MPZL2 antibody is un-conjugated
Application:	Western Blotting (WB)

Product Details

Immunogen:	MPZL2 antibody was raised using the N terminal of MPZL2 corresponding to a region with amino acids LEAVNGTDARLKCTFSSFAPVGDALVTWNRPLDGGPEQFVFYHIDPF
Specificity:	MPZL2 antibody was raised against the N terminal of MPZL2
Purification:	Affinity purified

Target Details

Target:	MPZL2
Alternative Name:	MPZL2 (MPZL2 Products)
Background:	Epithelial V-like antigen (EVA) is expressed in thymus epithelium and strongly downregulated by thymocyte developmental progression. This gene is expressed in the thymus and in several epithelial structures early in embryogenesis.

Target Details

Molecular Weight: 22 kDa (MW of target protein)

Application Details

Application Notes: WB: 1 µg/mL
Optimal conditions should be determined by the investigator.

Comment: MPZL2 Blocking Peptide, catalog no. 33R-4881, is also available for use as a blocking control in assays to test for specificity of this MPZL2 antibody

Restrictions: For Research Use only

Handling

Format: Lyophilized

Reconstitution: Lyophilized powder. Add distilled water for a 1 mg/mL concentration of MPZL2 antibody in PBS

Concentration: Lot specific

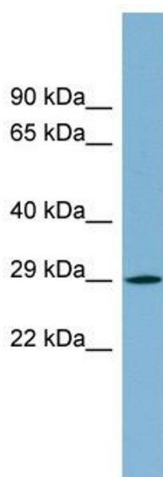
Buffer: PBS

Handling Advice: Avoid repeated freeze/thaw cycles.
Dilute only prior to immediate use.

Storage: 4 °C/-20 °C

Storage Comment: Store at 2-8 °C for short periods. For longer periods of storage, store at -20 °C.

Images



Western Blotting

Image 1. MPZL2 antibody used at 1 ug/ml to detect target protein.