

Datasheet for ABIN634713
anti-ICAM5 antibody (N-Term)



[Go to Product page](#)

1 Image

Overview

| | |
|----------------------|--------------------------------------|
| Quantity: | 100 µL |
| Target: | ICAM5 |
| Binding Specificity: | N-Term |
| Reactivity: | Human, Mouse, Rat |
| Host: | Rabbit |
| Clonality: | Polyclonal |
| Conjugate: | This ICAM5 antibody is un-conjugated |
| Application: | Western Blotting (WB) |

Product Details

| | |
|---------------|---|
| Immunogen: | ICAM5 antibody was raised using the N terminal of ICAM5 corresponding to a region with amino acids RRNGTQRGLRWLARQLVDIREPETQPVCFFRCARRTLQARGLIRTFQRPD |
| Specificity: | ICAM5 antibody was raised against the N terminal of ICAM5 |
| Purification: | Affinity purified |

Target Details

| | |
|-------------------|--|
| Target: | ICAM5 |
| Alternative Name: | ICAM5 (ICAM5 Products) |
| Background: | ICAM5 is a member of the intercellular adhesion molecule (ICAM) family. All ICAM proteins are type I transmembrane glycoproteins, contain 2-9 immunoglobulin-like C2-type domains, and bind to the leukocyte adhesion LFA-1 protein. This protein is expressed on the surface of |

Target Details

telencephalic neurons and displays two types of adhesion activity, homophilic binding between neurons and heterophilic binding between neurons and leukocytes.

Molecular Weight: 95 kDa (MW of target protein)

Pathways: [Cell-Cell Junction Organization](#), [ER-Nucleus Signaling](#), [Maintenance of Protein Location](#)

Application Details

Application Notes: WB: 1 µg/mL
Optimal conditions should be determined by the investigator.

Comment: ICAM5 Blocking Peptide, catalog no. 33R-8151, is also available for use as a blocking control in assays to test for specificity of this ICAM5 antibody

Restrictions: For Research Use only

Handling

Format: Lyophilized

Reconstitution: Lyophilized powder. Add distilled water for a 1 mg/mL concentration of ICAM5 antibody in PBS

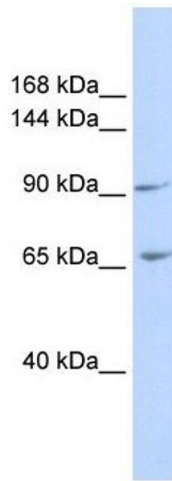
Concentration: Lot specific

Buffer: PBS

Handling Advice: Avoid repeated freeze/thaw cycles.
Dilute only prior to immediate use.

Storage: 4 °C/-20 °C

Storage Comment: Store at 2-8 °C for short periods. For longer periods of storage, store at -20 °C.



Western Blotting

Image 1. ICAM5 antibody used at 1 ug/ml to detect target protein.