

Datasheet for ABIN634717
anti-Claudin 11 antibody



[Go to Product page](#)

2 Images

Overview

Quantity:	100 µL
Target:	Claudin 11 (CLDN11)
Reactivity:	Human, Dog
Host:	Rabbit
Clonality:	Polyclonal
Conjugate:	This Claudin 11 antibody is un-conjugated
Application:	Western Blotting (WB), Immunohistochemistry (IHC)

Product Details

Immunogen:	Claudin 11 antibody was raised using a synthetic peptide corresponding to a region with amino acids VSFGYSLYAGWIGAVLCLVGGCVILCCAGDAQAFGENRFYYTAGSSSPH
Purification:	Affinity purified

Target Details

Target:	Claudin 11 (CLDN11)
Alternative Name:	Claudin 11 (CLDN11 Products)
Background:	CLDN11 belongs to the claudin family of tight junction associated proteins and is a major component of central nervous system myelin that is necessary for normal CNS function. There is growing evidence that the protein determines the permeability between layers of myelin sheaths via focal adhesion and, with its expression highly regulated during development, may play an important role in cellular proliferation and migration. In addition, the protein is a

Target Details

candidate autoantigen in the development of autoimmune demyelinating disease.

Molecular Weight: 22 kDa (MW of target protein)

Pathways: [Hepatitis C](#)

Application Details

Application Notes: WB: 0.5 µg/mL, IHC: 4-8 µg/mL
Optimal conditions should be determined by the investigator.

Comment: Claudin 11 Blocking Peptide, catalog no. 33R-9803, is also available for use as a blocking control in assays to test for specificity of this Claudin 11 antibody

Restrictions: For Research Use only

Handling

Format: Lyophilized

Reconstitution: Lyophilized powder. Add distilled water for a 1 mg/mL concentration of CLDN11 antibody in PBS

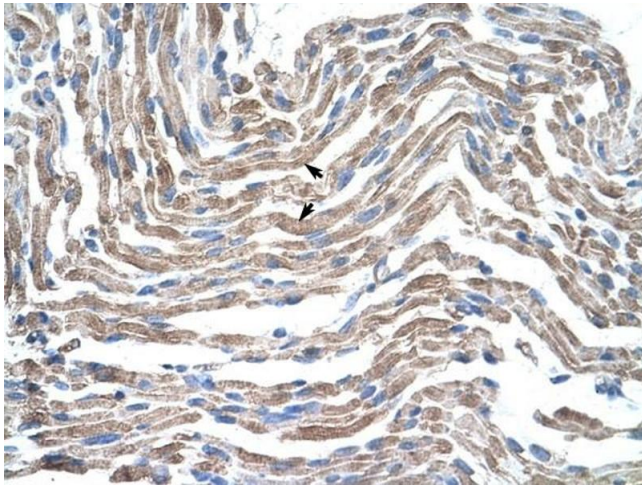
Concentration: Lot specific

Buffer: PBS

Handling Advice: Avoid repeated freeze/thaw cycles.

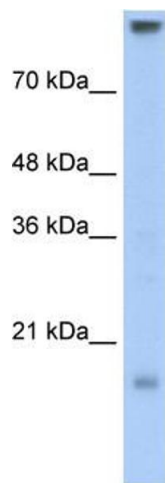
Storage: 4 °C/-20 °C

Storage Comment: Store at 2-8 °C for short periods. For longer periods of storage, store at -20 °C.



Immunohistochemistry

Image 1. Claudin 11 antibody was used for immunohistochemistry at a concentration of 4-8 ug/ml to stain Skeletal muscle cells (arrows) in Human Muscle. Magnification is at 400X



Western Blotting

Image 2. Claudin 11 antibody used at 0.5 ug/ml to detect target protein.