

Datasheet for ABIN634718
anti-CNTNAP3 antibody (Middle Region)



[Go to Product page](#)

1 Image

Overview

| | |
|----------------------|--|
| Quantity: | 100 µL |
| Target: | CNTNAP3 |
| Binding Specificity: | Middle Region |
| Reactivity: | Human |
| Host: | Rabbit |
| Clonality: | Polyclonal |
| Conjugate: | This CNTNAP3 antibody is un-conjugated |
| Application: | Western Blotting (WB) |

Product Details

| | |
|---------------|--|
| Immunogen: | CNTNAP3 antibody was raised using the middle region of CNTNAP3 corresponding to a region with amino acids GSGPLGPFLVYCNMTADAAWTVVQHGGPDAVTLRGAPSGHPRSAVSFAYA |
| Specificity: | CNTNAP3 antibody was raised against the middle region of CNTNAP3 |
| Purification: | Affinity purified |

Target Details

| | |
|-------------------|---|
| Target: | CNTNAP3 |
| Alternative Name: | CNTNAP3 (CNTNAP3 Products) |
| Background: | The protein encoded by this gene belongs to the NCP family of cell-recognition molecules. This family represents a distinct subgroup of the neuexins. NCP proteins mediate neuron-glia interactions in vertebrates and glial-glia contact in invertebrates. |

Target Details

Molecular Weight: 141 kDa (MW of target protein)

Application Details

Application Notes: WB: 1 µg/mL
Optimal conditions should be determined by the investigator.

Comment: CNTNAP3 Blocking Peptide, catalog no. 33R-3563, is also available for use as a blocking control in assays to test for specificity of this CNTNAP3 antibody

Restrictions: For Research Use only

Handling

Format: Lyophilized

Reconstitution: Lyophilized powder. Add distilled water for a 1 mg/mL concentration of CNTNAP3 antibody in PBS

Concentration: Lot specific

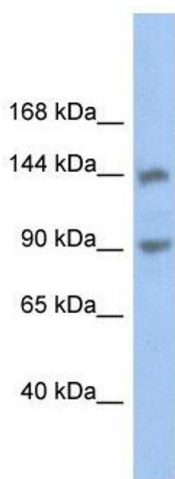
Buffer: PBS

Handling Advice: Avoid repeated freeze/thaw cycles.
Dilute only prior to immediate use.

Storage: 4 °C/-20 °C

Storage Comment: Store at 2-8 °C for short periods. For longer periods of storage, store at -20 °C.

Images



Western Blotting

Image 1. CNTNAP3 antibody used at 1 µg/ml to detect target protein.