

Datasheet for ABIN634721  
**anti-SIGLEC12 antibody (N-Term)**



[Go to Product page](#)

1 Image

## Overview

Quantity:	100 µL
Target:	SIGLEC12
Binding Specificity:	N-Term
Reactivity:	Human
Host:	Rabbit
Clonality:	Polyclonal
Conjugate:	This SIGLEC12 antibody is un-conjugated
Application:	Western Blotting (WB)

## Product Details

Immunogen:	SIGLEC12 antibody was raised using the N terminal of SIGLEC12 corresponding to a region with amino acids DTRESDAGTYVFCVERGNMKWNYKYDQLSVNVTASQDLLSRYLEVPESV
Specificity:	SIGLEC12 antibody was raised against the N terminal of SIGLEC12
Purification:	Affinity purified

## Target Details

Target:	SIGLEC12
Alternative Name:	SIGLEC12 ( <a href="#">SIGLEC12 Products</a> )
Background:	Sialic acid-binding immunoglobulin-like lectins (SIGLECs) are a family of cell surface proteins belonging to the immunoglobulin superfamily. They mediate protein-carbohydrate interactions by selectively binding to different sialic acid moieties present on glycolipids and glycoproteins.

## Target Details

---

SIGLEC12 is a member of the SIGLEC3-like subfamily of SIGLECs. SIGLEC12, upon tyrosine phosphorylation, has been shown to recruit the Src homology 2 domain-containing protein-tyrosine phosphatases SHP1 and SHP2.

Molecular Weight: 63 kDa (MW of target protein)

## Application Details

---

Application Notes: WB: 1 µg/mL  
Optimal conditions should be determined by the investigator.

Comment: SIGLEC12 Blocking Peptide, catalog no. 33R-2208, is also available for use as a blocking control in assays to test for specificity of this SIGLEC12 antibody

Restrictions: For Research Use only

## Handling

---

Format: Lyophilized

Reconstitution: Lyophilized powder. Add distilled water for a 1 mg/mL concentration of SIGLEC12 antibody in PBS

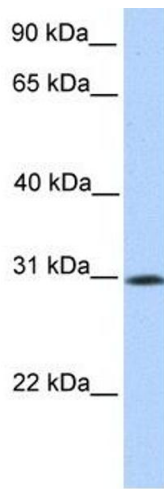
Concentration: Lot specific

Buffer: PBS

Handling Advice: Avoid repeated freeze/thaw cycles.  
Dilute only prior to immediate use.

Storage: 4 °C/-20 °C

Storage Comment: Store at 2-8 °C for short periods. For longer periods of storage, store at -20 °C.



### Western Blotting

**Image 1.** SIGLEC12 antibody used at 1 ug/ml to detect target protein.