

Datasheet for ABIN634734
anti-GJD2 antibody (Middle Region)



[Go to Product page](#)

1 Image

Overview

Quantity:	100 µL
Target:	GJD2
Binding Specificity:	Middle Region
Reactivity:	Human, Mouse, Rat
Host:	Rabbit
Clonality:	Polyclonal
Conjugate:	This GJD2 antibody is un-conjugated
Application:	Western Blotting (WB)

Product Details

Immunogen:	GJD2 antibody was raised using the middle region of GJD2 corresponding to a region with amino acids ELNHLGWRKIKLAVRGAQAKRKSIEIRNKDLPRVSVPNFGRTQSSDSAY
Specificity:	GJD2 antibody was raised against the middle region of GJD2
Purification:	Affinity purified

Target Details

Target:	GJD2
Alternative Name:	GJD2 (GJD2 Products)
Background:	GJD2 is a member of the connexin gene family that is expressed predominantly in mammalian neurons. Connexins associate in groups of 6 and are organized radially around a central pore to form connexons. Each gap junction intercellular channel is formed by the conjunction of 2

Target Details

connexons.

Molecular Weight: 36 kDa (MW of target protein)

Application Details

Application Notes: WB: 1 µg/mL

Optimal conditions should be determined by the investigator.

Comment: GJD2 Blocking Peptide, catalog no. 33R-2564, is also available for use as a blocking control in assays to test for specificity of this GJD2 antibody

Restrictions: For Research Use only

Handling

Format: Lyophilized

Reconstitution: Lyophilized powder. Add distilled water for a 1 mg/mL concentration of GJD2 antibody in PBS

Concentration: Lot specific

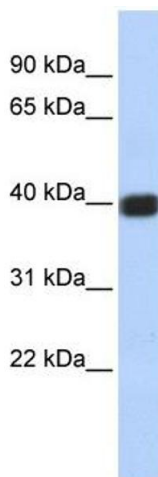
Buffer: PBS

Handling Advice: Avoid repeated freeze/thaw cycles.
Dilute only prior to immediate use.

Storage: 4 °C/-20 °C

Storage Comment: Store at 2-8 °C for short periods. For longer periods of storage, store at -20 °C.

Images



Western Blotting

Image 1. GJD2 antibody used at 1 µg/ml to detect target protein.