

Datasheet for ABIN634749
anti-ITFG1 antibody (N-Term)



[Go to Product page](#)

1 Image

Overview

Quantity:	100 µL
Target:	ITFG1
Binding Specificity:	N-Term
Reactivity:	Human, Mouse, Rat
Host:	Rabbit
Clonality:	Polyclonal
Conjugate:	This ITFG1 antibody is un-conjugated
Application:	Western Blotting (WB)

Product Details

Immunogen:	ITFG1 antibody was raised using the N terminal of ITFG1 corresponding to a region with amino acids TAEFGAEAWGTLAAFGLNSDKQTDLFVLRERNDLIVFLADQNAPYFKP
Specificity:	ITFG1 antibody was raised against the N terminal of ITFG1
Purification:	Affinity purified

Target Details

Target:	ITFG1
Alternative Name:	ITFG1 (ITFG1 Products)
Background:	ITFG1 belongs to the TIP family. It contains 1 FG-GAP repeat. ITFG1 is a modulator of T-cell function. It has a protective effect in graft versus host disease model.

Target Details

Molecular Weight: 68 kDa (MW of target protein)

Application Details

Application Notes: WB: 1 µg/mL
Optimal conditions should be determined by the investigator.

Comment: ITFG1 Blocking Peptide, catalog no. 33R-8970, is also available for use as a blocking control in assays to test for specificity of this ITFG1 antibody

Restrictions: For Research Use only

Handling

Format: Lyophilized

Reconstitution: Lyophilized powder. Add distilled water for a 1 mg/mL concentration of ITFG1 antibody in PBS

Concentration: Lot specific

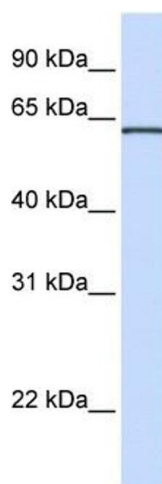
Buffer: PBS

Handling Advice: Avoid repeated freeze/thaw cycles.
Dilute only prior to immediate use.

Storage: 4 °C/-20 °C

Storage Comment: Store at 2-8 °C for short periods. For longer periods of storage, store at -20 °C.

Images



Western Blotting

Image 1. ITFG1 antibody used at 1 ug/ml to detect target protein.