

Datasheet for ABIN634751
anti-Cadherin 7 antibody (N-Term)



[Go to Product page](#)

1 Image

Overview

Quantity:	100 µL
Target:	Cadherin 7 (CDH7)
Binding Specificity:	N-Term
Reactivity:	Human, Mouse, Rat, Dog, Zebrafish (Danio rerio)
Host:	Rabbit
Clonality:	Polyclonal
Conjugate:	This Cadherin 7 antibody is un-conjugated
Application:	Western Blotting (WB)

Product Details

Immunogen:	CDH7 antibody was raised using the N terminal of CDH7 corresponding to a region with amino acids PKFLDGPYTAGVPEMSPVGTSSVQVTATDADDPTYGNSARVVYSILQGQP
Specificity:	CDH7 antibody was raised against the N terminal of CDH7
Purification:	Affinity purified

Target Details

Target:	Cadherin 7 (CDH7)
Alternative Name:	CDH7 (CDH7 Products)
Background:	CDH7 is a calcium dependent cell-cell adhesion glycoprotein comprised of five extracellular cadherin repeats, a transmembrane region and a highly conserved cytoplasmic tail. Type II (atypical) cadherins are defined based on their lack of a HAV cell adhesion recognition

Target Details

sequence specific to type I cadherins. Cadherins mediate cell-cell binding in a homophilic manner, contributing to the sorting of heterogeneous cell types and the maintenance of orderly structures.

Molecular Weight: 82 kDa (MW of target protein)

Pathways: [Cell-Cell Junction Organization](#)

Application Details

Application Notes: WB: 0.25 µg/mL
Optimal conditions should be determined by the investigator.

Comment: CDH7 Blocking Peptide, catalog no. 33R-7167, is also available for use as a blocking control in assays to test for specificity of this CDH7 antibody

Restrictions: For Research Use only

Handling

Format: Lyophilized

Reconstitution: Lyophilized powder. Add distilled water for a 1 mg/mL concentration of CDH7 antibody in PBS

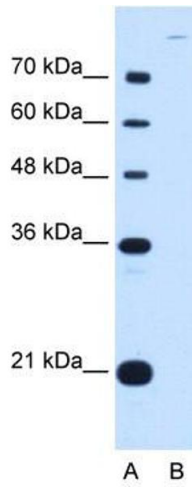
Concentration: Lot specific

Buffer: PBS

Handling Advice: Avoid repeated freeze/thaw cycles.
Dilute only prior to immediate use.

Storage: 4 °C/-20 °C

Storage Comment: Store at 2-8 °C for short periods. For longer periods of storage, store at -20 °C.



Western Blotting

Image 1. CDH7 antibody used at 0.25 ug/ml to detect target protein.