

Datasheet for ABIN634755  
**anti-SIGLEC9 antibody (C-Term)**



[Go to Product page](#)

1 Image

## Overview

Quantity:	100 µL
Target:	SIGLEC9
Binding Specificity:	C-Term
Reactivity:	Human
Host:	Rabbit
Clonality:	Polyclonal
Conjugate:	This SIGLEC9 antibody is un-conjugated
Application:	Western Blotting (WB)

## Product Details

Immunogen:	SIGLEC9 antibody was raised using the C terminal of SIGLEC9 corresponding to a region with amino acids PWVHLRDAAEFTCRAQNPLGSQQVYLNVSLSKATSGVTQGVVGGAGATA
Specificity:	SIGLEC9 antibody was raised against the C terminal of SIGLEC9
Purification:	Affinity purified

## Target Details

Target:	SIGLEC9
Alternative Name:	SIGLEC9 ( <a href="#">SIGLEC9 Products</a> )
Background:	SIGLEC9 is a putative adhesion molecule that mediates sialic-acid dependent binding to cells. It preferentially binds to alpha2,3- or 2,6-linked sialic acid. The sialic acid recognition site may be masked by cis interactions with sialic acids on the same cell surface.

## Target Details

---

Molecular Weight: 50 kDa (MW of target protein)

## Application Details

---

Application Notes: WB: 0.5 µg/mL  
Optimal conditions should be determined by the investigator.

Comment: SIGLEC9 Blocking Peptide, catalog no. 33R-7438, is also available for use as a blocking control in assays to test for specificity of this SIGLEC9 antibody

Restrictions: For Research Use only

## Handling

---

Format: Lyophilized

Reconstitution: Lyophilized powder. Add distilled water for a 1 mg/mL concentration of SIGLEC9 antibody in PBS

Concentration: Lot specific

Buffer: PBS

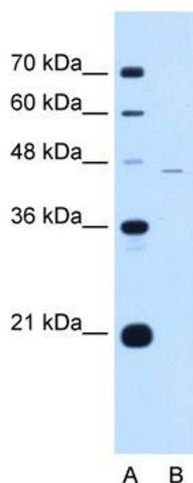
Handling Advice: Avoid repeated freeze/thaw cycles.  
Dilute only prior to immediate use.

Storage: 4 °C/-20 °C

Storage Comment: Store at 2-8 °C for short periods. For longer periods of storage, store at -20 °C.

## Images

---



### Western Blotting

**Image 1.** SIGLEC9 antibody used at 0.5 ug/ml to detect target protein.