

Datasheet for ABIN634772

**anti-LONRF2 antibody (Middle Region)**[Go to Product page](#)**1** Image

## Overview

|                      |                                       |
|----------------------|---------------------------------------|
| Quantity:            | 100 µL                                |
| Target:              | LONRF2                                |
| Binding Specificity: | Middle Region                         |
| Reactivity:          | Human, Mouse, Rat                     |
| Host:                | Rabbit                                |
| Clonality:           | Polyclonal                            |
| Conjugate:           | This LONRF2 antibody is un-conjugated |
| Application:         | Western Blotting (WB)                 |

## Product Details

|               |  |
|---------------|--|
| Immunogen:    | LONRF2 antibody was raised using the middle region of LONRF2 corresponding to a region with amino acids FGMCLSAEHAGLSEYGCMLKDVRTFPDGSSVVDAIGISRFRVLSHRHR |
| Specificity:  | LONRF2 antibody was raised against the middle region of LONRF2   |
| Purification: | Affinity purified  |

## Target Details

|                   |  |
|-------------------|--|
| Target:           | LONRF2   |
| Alternative Name: | LONRF2 ( <a href="#">LONRF2 Products</a> )   |
| Background:       | LONRF2 contains 1 Lon domain, 1 RING-type zinc finger and 6 TPR repeats. The function of the LONRF2 protein remains unknown. |

## Target Details

Molecular Weight: 84 kDa (MW of target protein)

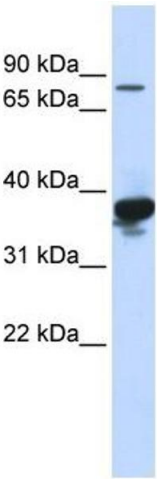
## Application Details

|                    |  |
|--------------------|--|
| Application Notes: | WB: 1 µg/mL<br>Optimal conditions should be determined by the investigator.  |
| Comment:           | LONRF2 Blocking Peptide, catalog no. 33R-2908, is also available for use as a blocking control in assays to test for specificity of this LONRF2 antibody |
| Restrictions:      | For Research Use only  |

## Handling

|                  |   |
|------------------|---|
| Format:          | Lyophilized   |
| Reconstitution:  | Lyophilized powder. Add distilled water for a 1 mg/mL concentration of LONRF2 antibody in PBS |
| Concentration:   | Lot specific  |
| Buffer:          | PBS   |
| Handling Advice: | Avoid repeated freeze/thaw cycles.<br>Dilute only prior to immediate use.                     |
| Storage:         | 4 °C/-20 °C   |
| Storage Comment: | Store at 2-8 °C for short periods. For longer periods of storage, store at -20 °C.            |

## Images



### Western Blotting

**Image 1.** LONRF2 antibody used at 1 ug/ml to detect target protein.