

Datasheet for ABIN634777
anti-COPA antibody (N-Term)



[Go to Product page](#)

1 Image

Overview

Quantity:	100 µL
Target:	COPA
Binding Specificity:	N-Term
Reactivity:	Human, Mouse
Host:	Rabbit
Clonality:	Polyclonal
Conjugate:	This COPA antibody is un-conjugated
Application:	Western Blotting (WB)

Product Details

Immunogen:	COPA antibody was raised using the N terminal of COPA corresponding to a region with amino acids PWILTSLHNGVIQLWDYRMCTLIDKFDEHDGFPVRGIDFHKQQPLFVSGGD
Specificity:	COPA antibody was raised against the N terminal of COPA
Purification:	Affinity purified

Target Details

Target:	COPA
Alternative Name:	COPA (COPA Products)
Background:	In eukaryotic cells, protein transport between the endoplasmic reticulum and Golgi compartments is mediated in part by non-clathrin-coated vesicular coat proteins (COPs). The alpha-COP, encoded by COPA, shares high sequence similarity with RET1P, the alpha subunit of

Target Details

the coatomer complex in yeast. Also, the N-terminal 25 amino acids of alpha-COP encode the bioactive peptide, xenin, which stimulates exocrine pancreatic secretion and may act as a gastrointestinal hormone.

Molecular Weight: 135 kDa (MW of target protein)

Pathways: [Hormone Activity](#)

Application Details

Application Notes: WB: 0.5 µg/mL
Optimal conditions should be determined by the investigator.

Comment: COPA Blocking Peptide, catalog no. 33R-7432, is also available for use as a blocking control in assays to test for specificity of this COPA antibody

Restrictions: For Research Use only

Handling

Format: Lyophilized

Reconstitution: Lyophilized powder. Add distilled water for a 1 mg/mL concentration of COPA antibody in PBS

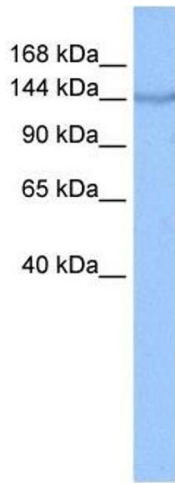
Concentration: Lot specific

Buffer: PBS

Handling Advice: Avoid repeated freeze/thaw cycles.
Dilute only prior to immediate use.

Storage: 4 °C/-20 °C

Storage Comment: Store at 2-8 °C for short periods. For longer periods of storage, store at -20 °C.



Western Blotting

Image 1. COPA antibody used at 0.5 ug/ml to detect target protein.