

Datasheet for ABIN634788

anti-Stanniocalcin 1 antibody (N-Term)[Go to Product page](#)**1** Image

Overview

Quantity:	100 µL
Target:	Stanniocalcin 1 (STC1)
Binding Specificity:	N-Term
Reactivity:	Human, Mouse, Rat
Host:	Rabbit
Clonality:	Polyclonal
Conjugate:	This Stanniocalcin 1 antibody is un-conjugated
Application:	Western Blotting (WB)

Product Details

Immunogen:	STC1 antibody was raised using the N terminal of STC1 corresponding to a region with amino acids MLQNSAVLLLVVISASATHEAEQNDSVSPRKS RVAAQNSAEVVRCLNSAL
Specificity:	STC1 antibody was raised against the N terminal of STC1
Purification:	Affinity purified

Target Details

Target:	Stanniocalcin 1 (STC1)
Alternative Name:	STC1 (STC1 Products)
Background:	STC1 is a secreted, homodimeric glycoprotein that is expressed in a wide variety of tissues and may have autocrine or paracrine functions. It contains 11 conserved cysteine residues and is phosphorylated by protein kinase C exclusively on its serine residues. The protein may play a

Target Details

role in the regulation of renal and intestinal calcium and phosphate transport, cell metabolism, or cellular calcium/phosphate homeostasis. Overexpression of human stanniocalcin 1 in mice produces high serum phosphate levels, dwarfism, and increased metabolic rate.

Molecular Weight: 26 kDa (MW of target protein)

Pathways: [Hormone Activity](#)

Application Details

Application Notes: WB: 1 µg/mL
Optimal conditions should be determined by the investigator.

Comment: STC1 Blocking Peptide, catalog no. 33R-6205, is also available for use as a blocking control in assays to test for specificity of this STC1 antibody

Restrictions: For Research Use only

Handling

Format: Lyophilized

Reconstitution: Lyophilized powder. Add distilled water for a 1 mg/mL concentration of STC1 antibody in PBS

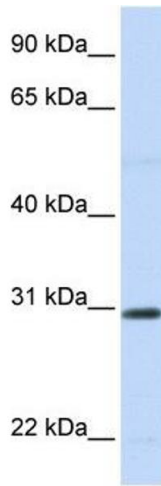
Concentration: Lot specific

Buffer: PBS

Handling Advice: Avoid repeated freeze/thaw cycles.
Dilute only prior to immediate use.

Storage: 4 °C/-20 °C

Storage Comment: Store at 2-8 °C for short periods. For longer periods of storage, store at -20 °C.



Western Blotting

Image 1. STC1 antibody used at 1 ug/ml to detect target protein.