

Datasheet for ABIN634794
anti-Leptin antibody (N-Term)



[Go to Product page](#)

2 Images

Overview

Quantity:	100 µL
Target:	Leptin (LEP)
Binding Specificity:	N-Term
Reactivity:	Human, Mouse
Host:	Rabbit
Clonality:	Polyclonal
Conjugate:	This Leptin antibody is un-conjugated
Application:	Western Blotting (WB)

Product Details

Immunogen:	Leptin antibody was raised using the N terminal of LEP corresponding to a region with amino acids MHWGTLCGFLWLWPYLFYVQAVPIQKVQDDTKLIKTIVTRINDISHTQS
Specificity:	Leptin antibody was raised against the N terminal of LEP
Purification:	Affinity purified

Target Details

Target:	Leptin (LEP)
Alternative Name:	Leptin (LEP Products)
Background:	LEP is a protein that is secreted by white adipocytes, and which plays a major role in the regulation of body weight. This protein, which acts through the leptin receptor, functions as part of a signaling pathway that can inhibit food intake.

Target Details

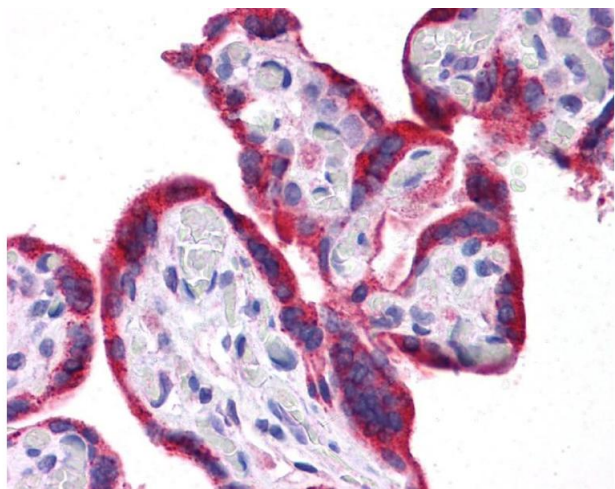
Molecular Weight:	16 kDa (MW of target protein)
Pathways:	JAK-STAT Signaling , AMPK Signaling , Hormone Transport , Peptide Hormone Metabolism , Hormone Activity , Negative Regulation of Hormone Secretion , Regulation of Carbohydrate Metabolic Process , Feeding Behaviour , Monocarboxylic Acid Catabolic Process

Application Details

Application Notes:	WB: 1 µg/mL Optimal conditions should be determined by the investigator.
Comment:	Leptin Blocking Peptide, catalog no. 33R-6105, is also available for use as a blocking control in assays to test for specificity of this Leptin antibody
Restrictions:	For Research Use only

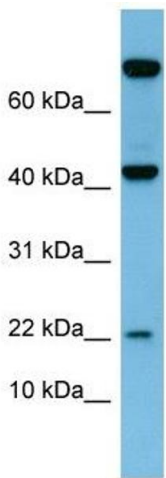
Handling

Format:	Lyophilized
Reconstitution:	Lyophilized powder. Add distilled water for a 1 mg/mL concentration of LEP antibody in PBS
Concentration:	Lot specific
Buffer:	PBS
Handling Advice:	Avoid repeated freeze/thaw cycles. Dilute only prior to immediate use.
Storage:	4 °C/-20 °C
Storage Comment:	Store at 2-8 °C for short periods. For longer periods of storage, store at -20 °C.



Immunohistochemistry

Image 1. Leptin antibody was used for immunohistochemistry at a concentration of 4-8 ug/ml. Magnification is at 400X



Western Blotting

Image 2. Leptin antibody used at 1 ug/ml to detect target protein.