

Datasheet for ABIN634819
anti-TMEM168 antibody (C-Term)



[Go to Product page](#)

1 Image

Overview

Quantity:	100 µL
Target:	TMEM168
Binding Specificity:	C-Term
Reactivity:	Human, Mouse, Rat
Host:	Rabbit
Clonality:	Polyclonal
Conjugate:	This TMEM168 antibody is un-conjugated
Application:	Western Blotting (WB)

Product Details

Immunogen:	TMEM168 antibody was raised using the C terminal of TMEM168 corresponding to a region with amino acids EEADPPQLGDFTKDWVEYNCNSSNNICWTEKGRTVKAVYGVSKRWSDYTL
Specificity:	TMEM168 antibody was raised against the C terminal of TMEM168
Purification:	Affinity purified

Target Details

Target:	TMEM168
Alternative Name:	TMEM168 (TMEM168 Products)
Background:	TMEM168 is a multi-pass membrane protein. It belongs to the TMEM168 family. The exact function of TMEM168 remains unknown.

Target Details

Molecular Weight: 80 kDa (MW of target protein)

Application Details

Application Notes: WB: 1 µg/mL
Optimal conditions should be determined by the investigator.

Comment: TMEM168 Blocking Peptide, catalog no. 33R-2336, is also available for use as a blocking control in assays to test for specificity of this TMEM168 antibody

Restrictions: For Research Use only

Handling

Format: Lyophilized

Reconstitution: Lyophilized powder. Add distilled water for a 1 mg/mL concentration of TMEM168 antibody in PBS

Concentration: Lot specific

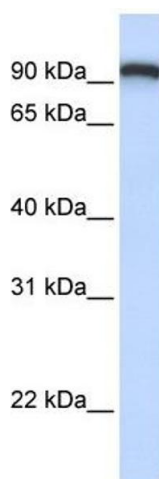
Buffer: PBS

Handling Advice: Avoid repeated freeze/thaw cycles.
Dilute only prior to immediate use.

Storage: 4 °C/-20 °C

Storage Comment: Store at 2-8 °C for short periods. For longer periods of storage, store at -20 °C.

Images



Western Blotting

Image 1. TMEM168 antibody used at 1 µg/ml to detect target protein.