

Datasheet for ABIN634823
anti-ABCC9 antibody



[Go to Product page](#)

1 Image

Overview

Quantity:	100 µL
Target:	ABCC9
Reactivity:	Human, Mouse, Rat
Host:	Rabbit
Clonality:	Polyclonal
Conjugate:	This ABCC9 antibody is un-conjugated
Application:	Western Blotting (WB)

Product Details

Immunogen:	ABCC9 antibody was raised using a synthetic peptide corresponding to a region with amino acids AVVTEGGENFSVGQRQLFCLARAFVRKSSILIMDEATASIDMATENILQK
Purification:	Affinity purified

Target Details

Target:	ABCC9
Alternative Name:	ABCC9 (ABCC9 Products)
Background:	ABCC9 is a member of the superfamily of ATP-binding cassette (ABC) transporters. ABC proteins transport various molecules across extra- and intra-cellular membranes. ABC genes are divided into seven distinct subfamilies (ABC1, MDR/TAP, MRP, ALD, OABP, GCN20, White). This protein is a member of the MRP subfamily which is involved in multi-drug resistance. This protein is thought to form ATP-sensitive potassium channels in cardiac, skeletal, and vascular

Target Details

	and non-vascular smooth muscle.
Molecular Weight:	174 kDa (MW of target protein)

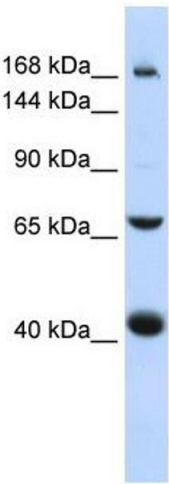
Application Details

Application Notes:	WB: 1 µg/mL Optimal conditions should be determined by the investigator.
Comment:	ABCC9 Blocking Peptide, catalog no. 33R-1620, is also available for use as a blocking control in assays to test for specificity of this ABCC9 antibody
Restrictions:	For Research Use only

Handling

Format:	Lyophilized
Reconstitution:	Lyophilized powder. Add distilled water for a 1 mg/mL concentration of ABCC9 antibody in PBS
Concentration:	Lot specific
Buffer:	PBS
Handling Advice:	Avoid repeated freeze/thaw cycles.
Storage:	4 °C/-20 °C
Storage Comment:	Store at 2-8 °C for short periods. For longer periods of storage, store at -20 °C.

Images



Western Blotting

Image 1. ABCC9 antibody used at 1 ug/ml to detect target protein.