

Datasheet for ABIN634831 **anti-G6PC antibody (N-Term)**

2 Images



[Go to Product page](#)

Overview

Quantity:	100 µL
Target:	G6PC
Binding Specificity:	N-Term
Reactivity:	Human, Dog
Host:	Rabbit
Clonality:	Polyclonal
Conjugate:	This G6PC antibody is un-conjugated
Application:	Western Blotting (WB)

Product Details

Immunogen:	G6 PC antibody was raised using the N terminal of G6 C corresponding to a region with amino acids NLVFKWILFGQRPYWWVLDTDYYSNTSVPLIKQFPVTCETGPGSPSGHAM
Specificity:	G6 PC antibody was raised against the N terminal of G6 C
Purification:	Affinity purified

Target Details

Target:	G6PC
Alternative Name:	G6PC (G6PC Products)
Background:	G6PC hydrolyzes glucose-6-phosphate to glucose in the endoplasmic reticulum. It forms with the glucose-6-phosphate transporter (SLC37A4/G6PT) the complex responsible for glucose production through glycogenolysis and gluconeogenesis. Hence, it is the key enzyme in

Target Details

homeostatic regulation of blood glucose levels.

Molecular Weight: 40 kDa (MW of target protein)

Pathways: [Carbohydrate Homeostasis](#), [Cellular Glucan Metabolic Process](#)

Application Details

Application Notes: WB: 1 µg/mL

Optimal conditions should be determined by the investigator.

Comment: G6PC Blocking Peptide, catalog no. 33R-6784, is also available for use as a blocking control in assays to test for specificity of this G6PC antibody

Restrictions: For Research Use only

Handling

Format: Lyophilized

Reconstitution: Lyophilized powder. Add distilled water for a 1 mg/mL concentration of G0 C antibody in PBS

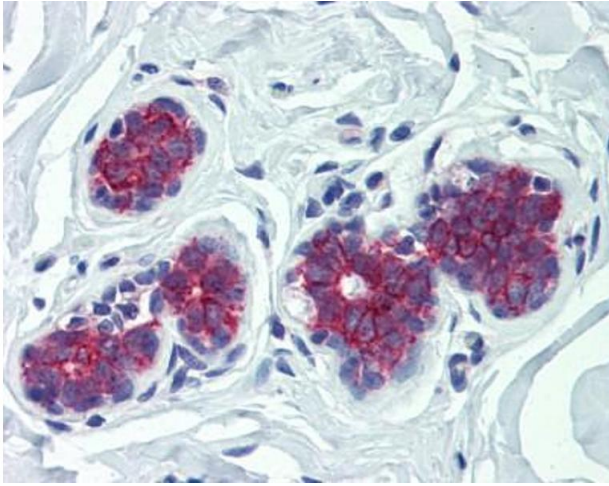
Concentration: Lot specific

Buffer: PBS

Handling Advice: Avoid repeated freeze/thaw cycles.
Dilute only prior to immediate use.

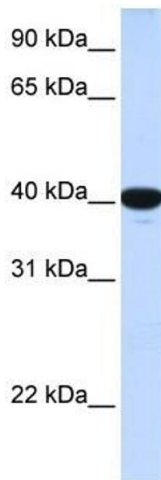
Storage: 4 °C/-20 °C

Storage Comment: Store at 2-8 °C for short periods. For longer periods of storage, store at -20 °C.



Immunohistochemistry

Image 1. G6PC antibody was used for immunohistochemistry at a concentration of 4-8 ug/ml. Magnification is at 400X



Western Blotting

Image 2. G6PC antibody used at 1 ug/ml to detect target protein.