

Datasheet for ABIN634833
anti-CTDNEP1A antibody



[Go to Product page](#)

1 Image

Overview

Quantity:	100 µL
Target:	CTDNEP1A
Reactivity:	Human, Mouse, Rat
Host:	Rabbit
Clonality:	Polyclonal
Conjugate:	This CTDNEP1A antibody is un-conjugated
Application:	Western Blotting (WB)

Product Details

Immunogen:	DULLARD antibody was raised using a synthetic peptide corresponding to a region with amino acids HPDNAIPIKSWFSDPSDTALLNLLPMLDALRFTADVRSVLSRNLHQHRLW
Purification:	Affinity purified

Target Details

Target:	CTDNEP1A
Alternative Name:	DULLARD (CTDNEP1A Products)
Background:	DULLARD is a serine/threonine phosphatase which may be required for proper nuclear membrane morphology. DULLARD was involved in LPIN1 dephosphorylation. It may antagonize BMP signaling.
Molecular Weight:	28 kDa (MW of target protein)

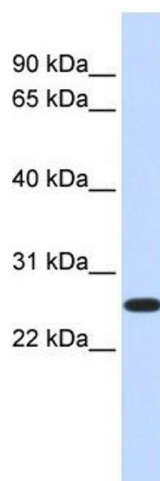
Application Details

Application Notes:	WB: 1 µg/mL Optimal conditions should be determined by the investigator.
Comment:	DULLARD Blocking Peptide, catalog no. 33R-3807, is also available for use as a blocking control in assays to test for specificity of this DULLARD antibody
Restrictions:	For Research Use only

Handling

Format:	Lyophilized
Reconstitution:	Lyophilized powder. Add distilled water for a 1 mg/mL concentration of DULLARD antibody in PBS
Concentration:	Lot specific
Buffer:	PBS
Handling Advice:	Avoid repeated freeze/thaw cycles.
Storage:	4 °C/-20 °C
Storage Comment:	Store at 2-8 °C for short periods. For longer periods of storage, store at -20 °C.

Images



Western Blotting

Image 1. DULLARD antibody used at 1 ug/ml to detect target protein.