

Datasheet for ABIN634838
anti-Seladin 1 antibody (N-Term)



[Go to Product page](#)

1 Image

Overview

Quantity:	100 µL
Target:	Seladin 1 (DHCR24)
Binding Specificity:	N-Term
Reactivity:	Human, Mouse, Rat
Host:	Rabbit
Clonality:	Polyclonal
Conjugate:	This Seladin 1 antibody is un-conjugated
Application:	Western Blotting (WB)

Product Details

Immunogen:	DHCR24 antibody was raised using the N terminal of DHCR24 corresponding to a region with amino acids FLLPLSLIFDIYYVRAWVVF KLSSAPRLHEQ RVRDIQKQVREWKEQGSK
Specificity:	DHCR24 antibody was raised against the N terminal of DHCR24
Purification:	Affinity purified

Target Details

Target:	Seladin 1 (DHCR24)
Alternative Name:	DHCR24 (DHCR24 Products)
Background:	DHCR24 is a flavin adenine dinucleotide (FAD)-dependent oxidoreductase which catalyzes the reduction of the delta-24 double bond of sterol intermediates during cholesterol biosynthesis. The protein contains a leader sequence that directs it to the endoplasmic reticulum membrane.

Target Details

Missense mutations in this gene have been associated with desmosterolosis. Also, reduced expression of the gene occurs in the temporal cortex of Alzheimer disease patients and overexpression has been observed in adrenal gland cancer cells.

Molecular Weight: 58 kDa (MW of target protein)

Application Details

Application Notes: WB: 1 µg/mL
Optimal conditions should be determined by the investigator.

Comment: DHCR24 Blocking Peptide, catalog no. 33R-2970, is also available for use as a blocking control in assays to test for specificity of this DHCR24 antibody

Restrictions: For Research Use only

Handling

Format: Lyophilized

Reconstitution: Lyophilized powder. Add distilled water for a 1 mg/mL concentration of DHCR24 antibody in PBS

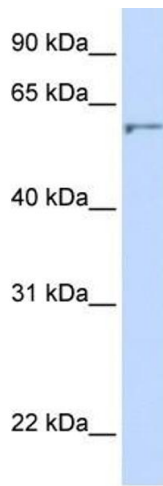
Concentration: Lot specific

Buffer: PBS

Handling Advice: Avoid repeated freeze/thaw cycles.
Dilute only prior to immediate use.

Storage: 4 °C/-20 °C

Storage Comment: Store at 2-8 °C for short periods. For longer periods of storage, store at -20 °C.



Western Blotting

Image 1. DHCR24 antibody used at 1 ug/ml to detect target protein.