

Datasheet for ABIN634845

**anti-SIL1 antibody**[Go to Product page](#)**1** Image

## Overview

Quantity:	100 µL
Target:	SIL1
Reactivity:	Human, Mouse, Rat
Host:	Rabbit
Clonality:	Polyclonal
Conjugate:	This SIL1 antibody is un-conjugated
Application:	Western Blotting (WB)

## Product Details

Immunogen:	SIL1 antibody was raised using a synthetic peptide corresponding to a region with amino acids KLQQYRQVHLLPGLWEQGWCEITAHLLALPEHDAREKVLQTLGVLLTTCR
Purification:	Affinity purified

## Target Details

Target:	SIL1
Alternative Name:	SIL1 ( <a href="#">SIL1 Products</a> )
Background:	SIL1 is a resident endoplasmic reticulum (ER), N-linked glycoprotein with an N-terminal ER targeting sequence, 2 putative N-glycosylation sites, and a C-terminal ER retention signal. This protein functions as a nucleotide exchange factor for another unfolded protein response protein. Mutations in its gene have been associated with Marinesco-Sjogren syndrome.
Molecular Weight:	49 kDa (MW of target protein)

## Target Details

---

Pathways: [Unfolded Protein Response, SARS-CoV-2 Protein Interactome](#)

## Application Details

---

Application Notes:	WB: 1 µg/mL Optimal conditions should be determined by the investigator.
Comment:	SIL1 Blocking Peptide, catalog no. 33R-4531, is also available for use as a blocking control in assays to test for specificity of this SIL1 antibody
Restrictions:	For Research Use only

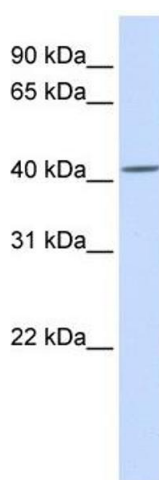
## Handling

---

Format:	Lyophilized
Reconstitution:	Lyophilized powder. Add distilled water for a 1 mg/mL concentration of SIL1 antibody in PBS
Concentration:	Lot specific
Buffer:	PBS
Handling Advice:	Avoid repeated freeze/thaw cycles.
Storage:	4 °C/-20 °C
Storage Comment:	Store at 2-8 °C for short periods. For longer periods of storage, store at -20 °C.

## Images

---



### Western Blotting

**Image 1.** SIL1 antibody used at 1 ug/ml to detect target protein.