

Datasheet for ABIN634846 **anti-MDM1 antibody (N-Term)**



[Go to Product page](#)

1 Image

Overview

Quantity:	100 µL
Target:	MDM1
Binding Specificity:	N-Term
Reactivity:	Human, Mouse
Host:	Rabbit
Clonality:	Polyclonal
Conjugate:	This MDM1 antibody is un-conjugated
Application:	Western Blotting (WB)

Product Details

Immunogen:	MDM1 antibody was raised using the N terminal of MDM1 corresponding to a region with amino acids GLRSDQLGITKEPSFISKRRVPYHDPQISKSLEWNGAISESNVVASPEPE
Specificity:	MDM1 antibody was raised against the N terminal of MDM1
Purification:	Affinity purified

Target Details

Target:	MDM1
Alternative Name:	MDM1 (MDM1 Products)
Background:	MDM1 is a nuclear protein similar to the mouse double minute 1 protein. The mouse gene is located in double minute (DM) chromatin particles and is amplified in the mouse transformed 3T3 cell line, and the protein is able to bind to p53.

Target Details

Molecular Weight: 25 kDa (MW of target protein)

Application Details

Application Notes: WB: 1 µg/mL
Optimal conditions should be determined by the investigator.

Comment: MDM1 Blocking Peptide, catalog no. 33R-3420, is also available for use as a blocking control in assays to test for specificity of this MDM1 antibody

Restrictions: For Research Use only

Handling

Format: Lyophilized

Reconstitution: Lyophilized powder. Add distilled water for a 1 mg/mL concentration of MDM1 antibody in PBS

Concentration: Lot specific

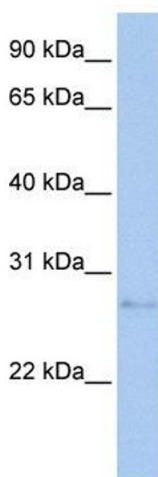
Buffer: PBS

Handling Advice: Avoid repeated freeze/thaw cycles.
Dilute only prior to immediate use.

Storage: 4 °C/-20 °C

Storage Comment: Store at 2-8 °C for short periods. For longer periods of storage, store at -20 °C.

Images



Western Blotting

Image 1. MDM1 antibody used at 1 µg/ml to detect target protein.