

Datasheet for ABIN634847
anti-TMEM135 antibody (N-Term)



[Go to Product page](#)

1 Image

Overview

Quantity:	100 µL
Target:	TMEM135
Binding Specificity:	N-Term
Reactivity:	Human
Host:	Rabbit
Clonality:	Polyclonal
Conjugate:	This TMEM135 antibody is un-conjugated
Application:	Western Blotting (WB)

Product Details

Immunogen:	TMEM135 antibody was raised using the N terminal of TMEM135 corresponding to a region with amino acids SLKIYAPLYLIAAILRKRKLDYYLHKLLPEILQSASFLTANGALYMAFFC
Specificity:	TMEM135 antibody was raised against the N terminal of TMEM135
Purification:	Affinity purified

Target Details

Target:	TMEM135
Alternative Name:	TMEM135 (TMEM135 Products)
Background:	TMEM135 protein is part of a conserved genetic network involved in fat storage and longevity regulation.

Target Details

Molecular Weight: 52 kDa (MW of target protein)

Application Details

Application Notes: WB: 1 µg/mL
Optimal conditions should be determined by the investigator.

Comment: TMEM135 Blocking Peptide, catalog no. 33R-8601, is also available for use as a blocking control in assays to test for specificity of this TMEM135 antibody

Restrictions: For Research Use only

Handling

Format: Lyophilized

Reconstitution: Lyophilized powder. Add distilled water for a 1 mg/mL concentration of TMEM135 antibody in PBS

Concentration: Lot specific

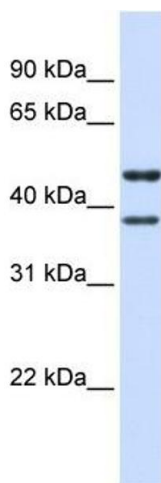
Buffer: PBS

Handling Advice: Avoid repeated freeze/thaw cycles.
Dilute only prior to immediate use.

Storage: 4 °C/-20 °C

Storage Comment: Store at 2-8 °C for short periods. For longer periods of storage, store at -20 °C.

Images



Western Blotting

Image 1. TMEM135 antibody used at 1 ug/ml to detect target protein.