

Datasheet for ABIN634852
anti-PDE3A antibody (N-Term)



[Go to Product page](#)

1 Image

Overview

Quantity:	100 µL
Target:	PDE3A
Binding Specificity:	N-Term
Reactivity:	Human
Host:	Rabbit
Clonality:	Polyclonal
Conjugate:	This PDE3A antibody is un-conjugated
Application:	Western Blotting (WB)

Product Details

Immunogen:	PDE3 A antibody was raised using the N terminal of PDE3 corresponding to a region with amino acids LLADPSLPPNVCTSLRAVSNLLSTQLTFQAIHKPRVNPVTLSSENYTCSD
Specificity:	PDE3 A antibody was raised against the N terminal of PDE3
Purification:	Affinity purified

Target Details

Target:	PDE3A
Alternative Name:	PDE3A (PDE3A Products)
Background:	PDE3A belongs to the cyclic nucleotide phosphodiesterase family. It hydrolyzes both cyclic AMP (cAMP) and cyclic GMP (cGMP).

Target Details

Molecular Weight: 125 kDa (MW of target protein)

Pathways: [cAMP Metabolic Process](#)

Application Details

Application Notes: WB: 1 µg/mL

Optimal conditions should be determined by the investigator.

Comment: PDE3A Blocking Peptide, catalog no. 33R-5115, is also available for use as a blocking control in assays to test for specificity of this PDE3A antibody

Restrictions: For Research Use only

Handling

Format: Lyophilized

Reconstitution: Lyophilized powder. Add distilled water for a 1 mg/mL concentration of PDE0 antibody in PBS

Concentration: Lot specific

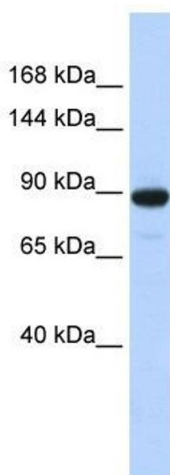
Buffer: PBS

Handling Advice: Avoid repeated freeze/thaw cycles.
Dilute only prior to immediate use.

Storage: 4 °C/-20 °C

Storage Comment: Store at 2-8 °C for short periods. For longer periods of storage, store at -20 °C.

Images



Western Blotting

Image 1. PDE3A antibody used at 1 µg/ml to detect target protein.