

## Datasheet for ABIN634854 **anti-SLC23A2 antibody**



[Go to Product page](#)

### 1 Image

#### Overview

Quantity:	100 µL
Target:	SLC23A2
Reactivity:	Human, Rat, Mouse
Host:	Rabbit
Clonality:	Polyclonal
Conjugate:	This SLC23A2 antibody is un-conjugated
Application:	Western Blotting (WB)

#### Product Details

Immunogen:	SLC23 A2 antibody was raised using a synthetic peptide corresponding to a region with amino acids VALIGLSGFQAAGERAGKHWGIAMLTIFLVLLFSQYARNVKFPLPIYKSK
Purification:	Affinity purified

#### Target Details

Target:	SLC23A2
Alternative Name:	SLC23A2 ( <a href="#">SLC23A2 Products</a> )
Background:	The absorption of vitamin C into the body and its distribution to organs requires two sodium-dependent vitamin C transporters. This gene encodes one of the two required transporters and the encoded protein accounts for tissue-specific uptake of vitamin C. Previously, this gene had an official symbol of SLC23A1.
Molecular Weight:	70 kDa (MW of target protein)

## Target Details

---

Pathways: [Skeletal Muscle Fiber Development](#)

## Application Details

---

Application Notes: WB: 1 µg/mL  
Optimal conditions should be determined by the investigator.

Comment: SLC23A2 Blocking Peptide, catalog no. 33R-9424, is also available for use as a blocking control in assays to test for specificity of this SLC23A2 antibody

Restrictions: For Research Use only

## Handling

---

Format: Lyophilized

Reconstitution: Lyophilized powder. Add distilled water for a 1 mg/mL concentration of SLC20 2 antibody in PBS

Concentration: Lot specific

Buffer: PBS

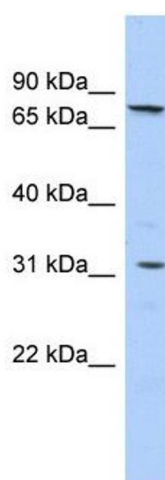
Handling Advice: Avoid repeated freeze/thaw cycles.

Storage: 4 °C/-20 °C

Storage Comment: Store at 2-8 °C for short periods. For longer periods of storage, store at -20 °C.

## Images

---



### Western Blotting

**Image 1.** SLC23A2 antibody used at 1 ug/ml to detect target protein.