

Datasheet for ABIN634865
anti-SLC22A14 antibody (N-Term)



[Go to Product page](#)

1 Image

Overview

| | |
|----------------------|---|
| Quantity: | 100 µL |
| Target: | SLC22A14 |
| Binding Specificity: | N-Term |
| Reactivity: | Human |
| Host: | Rabbit |
| Clonality: | Polyclonal |
| Conjugate: | This SLC22A14 antibody is un-conjugated |
| Application: | Western Blotting (WB) |

Product Details

| | |
|---------------|---|
| Immunogen: | SLC22 A14 antibody was raised using the N terminal of SLC22 14 corresponding to a region with amino acids IIQFGLNDTDCQDGWIYPDAKKRSLINEFDLVCGMETKKDTAQIMFMAG |
| Specificity: | SLC22 A14 antibody was raised against the N terminal of SLC22 14 |
| Purification: | Affinity purified |

Target Details

| | |
|-------------------|---|
| Target: | SLC22A14 |
| Alternative Name: | SLC22A14 (SLC22A14 Products) |
| Background: | SLC22A14 is a member of the organic-cation transporter family. SLC22A14 is a transmembrane protein which is thought to transport small molecules and since this protein is conserved among several species, it is suggested to have a fundamental role in mammalian |

Target Details

systems.

Molecular Weight: 67 kDa (MW of target protein)

Application Details

Application Notes: WB: 1 µg/mL
Optimal conditions should be determined by the investigator.

Comment: SLC22A14 Blocking Peptide, catalog no. 33R-4005, is also available for use as a blocking control in assays to test for specificity of this SLC22A14 antibody

Restrictions: For Research Use only

Handling

Format: Lyophilized

Reconstitution: Lyophilized powder. Add distilled water for a 1 mg/mL concentration of SLC20 14 antibody in PBS

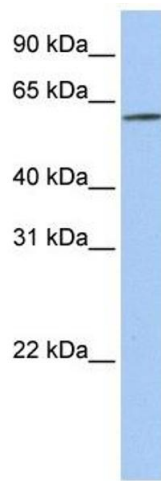
Concentration: Lot specific

Buffer: PBS

Handling Advice: Avoid repeated freeze/thaw cycles.
Dilute only prior to immediate use.

Storage: 4 °C/-20 °C

Storage Comment: Store at 2-8 °C for short periods. For longer periods of storage, store at -20 °C.



Western Blotting

Image 1. SLC22A14 antibody used at 1 ug/ml to detect target protein.