

Datasheet for ABIN634869  
**anti-KLHL31 antibody**

2 Images



[Go to Product page](#)

## Overview

Quantity:	100 µL
Target:	KLHL31
Reactivity:	Mouse, Human, Dog, Rat
Host:	Rabbit
Clonality:	Polyclonal
Conjugate:	This KLHL31 antibody is un-conjugated
Application:	Western Blotting (WB), Immunohistochemistry (IHC)

## Product Details

Immunogen:	KLHL31 antibody was raised using a synthetic peptide corresponding to a region with amino acids TPRGWHCAVTLSDRVYVMGGSQLGPRGERVDLTVCEYSPATGQWSYAAP
Purification:	Affinity purified

## Target Details

Target:	KLHL31
Alternative Name:	KLHL31 ( <a href="#">KLHL31 Products</a> )
Background:	KLHL31 is a transcriptional repressor in MAPK/JNK signaling pathway to regulate cellular functions. Overexpression inhibits the transcriptional activities of both the TPA-response element (TRE) and serum response element (SRE)
Molecular Weight:	70 kDa (MW of target protein)

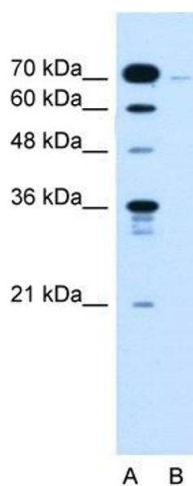
## Application Details

Application Notes:	WB: 0.5 µg/mL, IHC: 4-8 µg/mL Optimal conditions should be determined by the investigator.
Comment:	KLHL31 Blocking Peptide, catalog no. 33R-9231, is also available for use as a blocking control in assays to test for specificity of this KLHL31 antibody
Restrictions:	For Research Use only

## Handling

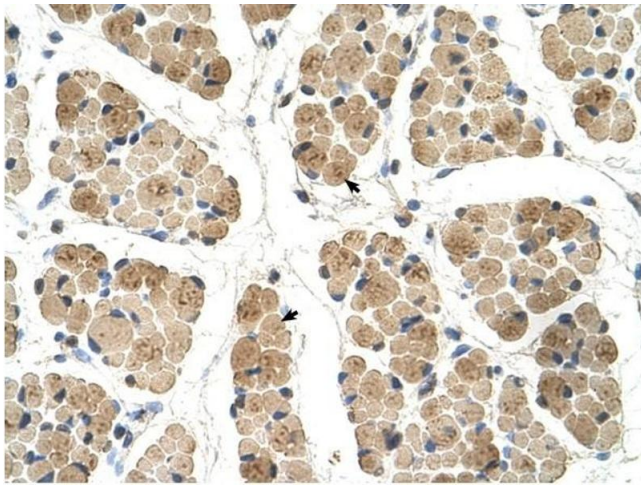
Format:	Lyophilized
Reconstitution:	Lyophilized powder. Add distilled water for a 1 mg/mL concentration of KLHL31 antibody in PBS
Concentration:	Lot specific
Buffer:	PBS
Handling Advice:	Avoid repeated freeze/thaw cycles.
Storage:	4 °C/-20 °C
Storage Comment:	Store at 2-8 °C for short periods. For longer periods of storage, store at -20 °C.

## Images



### Western Blotting

**Image 1.** KLHL31 antibody used at 0.5 ug/ml to detect target protein.



### Immunohistochemistry

**Image 2.** KLHL31 antibody was used for immunohistochemistry at a concentration of 4-8 ug/ml to stain Skeletal muscle cells (arrows) in Human Muscle. Magnification is at 400X