

Datasheet for ABIN634872  
**anti-DNASE1 antibody (N-Term)**



[Go to Product page](#)

1 Image

## Overview

Quantity:	100 µL
Target:	DNASE1
Binding Specificity:	N-Term
Reactivity:	Human
Host:	Rabbit
Clonality:	Polyclonal
Conjugate:	This DNASE1 antibody is un-conjugated
Application:	Western Blotting (WB)

## Product Details

Immunogen:	DNASE1 antibody was raised using the N terminal of DNASE1 corresponding to a region with amino acids GKLLDNLNQGAPDTYHYVVSEPLGRNSYKERYLFVYRPDQVSAVDSYYYY
Specificity:	DNASE1 antibody was raised against the N terminal of DNASE1
Purification:	Affinity purified

## Target Details

Target:	DNASE1
Alternative Name:	DNASE1 ( <a href="#">DNASE1 Products</a> )
Background:	This gene encodes a member of the DNase family. This protein is stored in the zymogen granules of the nuclear envelope and functions by cleaving DNA in an endonucleolytic manner. At least six autosomal codominant alleles have been characterized.

## Target Details

---

Molecular Weight: 29 kDa (MW of target protein)

## Application Details

---

Application Notes: WB: 1 µg/mL  
Optimal conditions should be determined by the investigator.

Comment: DNASE1 Blocking Peptide, catalog no. 33R-3371, is also available for use as a blocking control in assays to test for specificity of this DNASE1 antibody

Restrictions: For Research Use only

## Handling

---

Format: Lyophilized

Reconstitution: Lyophilized powder. Add distilled water for a 1 mg/mL concentration of DNASE1 antibody in PBS

Concentration: Lot specific

Buffer: PBS

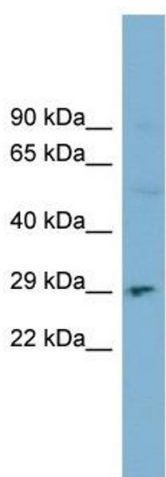
Handling Advice: Avoid repeated freeze/thaw cycles.  
Dilute only prior to immediate use.

Storage: 4 °C/-20 °C

Storage Comment: Store at 2-8 °C for short periods. For longer periods of storage, store at -20 °C.

## Images

---



### Western Blotting

**Image 1.** DNASE1 antibody used at 1 ug/ml to detect target protein.