

Datasheet for ABIN634881 **anti-SLC26A1 antibody**

2 Images



[Go to Product page](#)

Overview

Quantity:	100 µL
Target:	SLC26A1
Reactivity:	Human
Host:	Rabbit
Clonality:	Polyclonal
Conjugate:	This SLC26A1 antibody is un-conjugated
Application:	Immunohistochemistry (IHC), Western Blotting (WB)

Product Details

Immunogen:	SLC26 A1 antibody was raised using a synthetic peptide corresponding to a region with amino acids LYSLTGLDAGCMAARRKEGGSETGVGEGGPAQGEDLGPVSTRAALVPAAA
Purification:	Affinity purified

Target Details

Target:	SLC26A1
Alternative Name:	SLC26A1 (SLC26A1 Products)
Background:	SLC26A1 is a member of sulfate/anion transporter family. Family members are well conserved in their protein (aa length among species) structures, but have markedly different tissue expression patterns. Its gene is primarily expressed in the liver, pancreas, and brain.
Molecular Weight:	77 kDa (MW of target protein)
Pathways:	Glycosaminoglycan Metabolic Process , Ribonucleoside Biosynthetic Process , Dicarboxylic Acid

Target Details

Transport

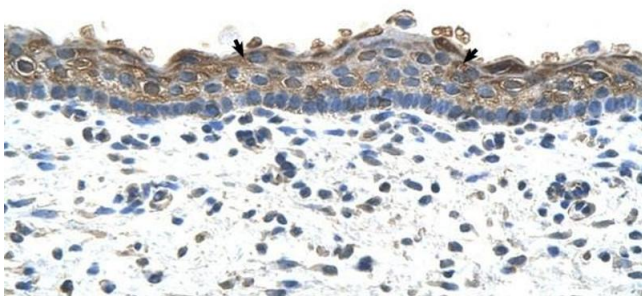
Application Details

Application Notes:	WB: 0.5 µg/mL, IHC: 4-8 µg/mL Optimal conditions should be determined by the investigator.
Comment:	SLC26A1 Blocking Peptide, catalog no. 33R-5575, is also available for use as a blocking control in assays to test for specificity of this SLC26A1 antibody
Restrictions:	For Research Use only

Handling

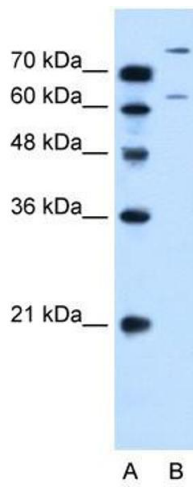
Format:	Lyophilized
Reconstitution:	Lyophilized powder. Add distilled water for a 1 mg/mL concentration of SLC20 1 antibody in PBS
Concentration:	Lot specific
Buffer:	PBS
Handling Advice:	Avoid repeated freeze/thaw cycles.
Storage:	4 °C/-20 °C
Storage Comment:	Store at 2-8 °C for short periods. For longer periods of storage, store at -20 °C.

Images



Immunohistochemistry

Image 1. SLC26A1 antibody was used for immunohistochemistry at a concentration of 4-8 ug/ml to stain Squamous epithelial cells (arrows) in Human Skin. Magnification is at 400X



Western Blotting

Image 2. SLC26A1 antibody used at 0.5 ug/ml to detect target protein.