

Datasheet for ABIN634886
anti-ARMCX1 antibody (C-Term)



[Go to Product page](#)

1 Image

Overview

Quantity:	100 µL
Target:	ARMCX1
Binding Specificity:	C-Term
Reactivity:	Human, Rat, Mouse
Host:	Rabbit
Clonality:	Polyclonal
Conjugate:	This ARM CX1 antibody is un-conjugated
Application:	Western Blotting (WB)

Product Details

Immunogen:	ARM CX1 antibody was raised using the C terminal of ARM CX1 corresponding to a region with amino acids DNIKNEGLASSRKEFSRSSLFFLFKESGVCVKKIKALANHNDLVVKVKVL
Specificity:	ARM CX1 antibody was raised against the C terminal of ARM CX1
Purification:	Affinity purified

Target Details

Target:	ARM CX1
Alternative Name:	ARM CX1 (ARM CX1 Products)
Background:	ARM CX1 is a member of the ALEX family of proteins and may play a role in tumor suppression. The protein contains a potential N-terminal transmembrane domain and two Armadillo (arm) repeats. Other proteins containing the arm repeat are involved in development, maintenance of

Target Details

tissue integrity, and tumorigenesis. This protein is closely localized with other family members, including ALEX2 and ALEX3, on the X chromosome.

Molecular Weight: 49 kDa (MW of target protein)

Application Details

Application Notes: WB: 1 µg/mL
Optimal conditions should be determined by the investigator.

Comment: ARM CX1 Blocking Peptide, catalog no. 33R-2081, is also available for use as a blocking control in assays to test for specificity of this ARM CX1 antibody

Restrictions: For Research Use only

Handling

Format: Lyophilized

Reconstitution: Lyophilized powder. Add distilled water for a 1 mg/mL concentration of ARM CX1 antibody in PBS

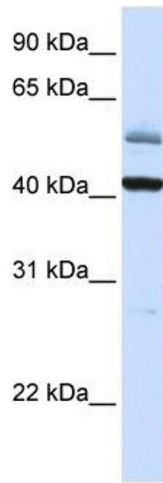
Concentration: Lot specific

Buffer: PBS

Handling Advice: Avoid repeated freeze/thaw cycles.
Dilute only prior to immediate use.

Storage: 4 °C/-20 °C

Storage Comment: Store at 2-8 °C for short periods. For longer periods of storage, store at -20 °C.



Western Blotting

Image 1. ARMCX1 antibody used at 1 ug/ml to detect target protein.