

Datasheet for ABIN634889 **anti-CLN6 antibody (C-Term)**



[Go to Product page](#)

1 Image

Overview

Quantity:	100 µL
Target:	CLN6
Binding Specificity:	C-Term
Reactivity:	Human, Mouse, Rat, Dog
Host:	Rabbit
Clonality:	Polyclonal
Conjugate:	This CLN6 antibody is un-conjugated
Application:	Western Blotting (WB)

Product Details

Immunogen:	CLN6 antibody was raised using the C terminal of CLN6 corresponding to a region with amino acids RLFLDSNGLFLFSSFALTLALLVALWVWAWLWNDPVLRKKYPGVIVPEPWA
Specificity:	CLN6 antibody was raised against the C terminal of CLN6
Purification:	Affinity purified

Target Details

Target:	CLN6
Alternative Name:	CLN6 (CLN6 Products)
Background:	CLN6 is one of eight which have been associated with neuronal ceroid lipofuscinoses (NCL). Also referred to as Batten disease, NCL comprises a class of autosomal recessive, neurodegenerative disorders affecting children. The genes responsible likely CLN6 involved in

Target Details

the degradation of post-translationally modified proteins in lysosomes. The primary defect in NCL disorders is thought to be associated with lysosomal storage function.

Molecular Weight: 36 kDa (MW of target protein)

Pathways: [Glycosaminoglycan Metabolic Process](#)

Application Details

Application Notes: WB: 1 µg/mL
Optimal conditions should be determined by the investigator.

Comment: CLN6 Blocking Peptide, catalog no. 33R-8022, is also available for use as a blocking control in assays to test for specificity of this CLN6 antibody

Restrictions: For Research Use only

Handling

Format: Lyophilized

Reconstitution: Lyophilized powder. Add distilled water for a 1 mg/mL concentration of CLN6 antibody in PBS

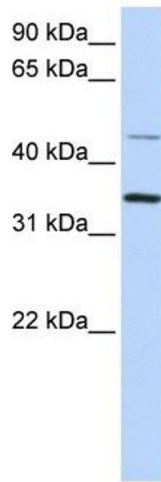
Concentration: Lot specific

Buffer: PBS

Handling Advice: Avoid repeated freeze/thaw cycles.
Dilute only prior to immediate use.

Storage: 4 °C/-20 °C

Storage Comment: Store at 2-8 °C for short periods. For longer periods of storage, store at -20 °C.



Western Blotting

Image 1. CLN6 antibody used at 1 ug/ml to detect target protein.