

Datasheet for ABIN634892
anti-Tmc2 antibody (Middle Region)



[Go to Product page](#)

1 Image

Overview

Quantity:	100 µL
Target:	Tmc2
Binding Specificity:	Middle Region
Reactivity:	Human, Mouse, Rat
Host:	Rabbit
Clonality:	Polyclonal
Conjugate:	This Tmc2 antibody is un-conjugated
Application:	Western Blotting (WB)

Product Details

Immunogen:	TMC2 antibody was raised using the middle region of TMC2 corresponding to a region with amino acids YCWCWDLEAGFPSYAEFDISGNVLGLIFNQGMIIWMGSFYAPGLVGINVLR
Specificity:	TMC2 antibody was raised against the middle region of TMC2
Purification:	Affinity purified

Target Details

Target:	Tmc2
Alternative Name:	TMC2 (Tmc2 Products)
Background:	TMC2 is considered a member of transmembrane proteins family. The specific function of this gene is unknown, however, expression in the inner ear suggests that it may be crucial for normal auditory function. This gene is considered a member of a gene family predicted to

Target Details

encode transmembrane proteins.

Molecular Weight: 102 kDa (MW of target protein)

Application Details

Application Notes: WB: 1 µg/mL

Optimal conditions should be determined by the investigator.

Comment: TMC2 Blocking Peptide, catalog no. 33R-10062, is also available for use as a blocking control in assays to test for specificity of this TMC2 antibody

Restrictions: For Research Use only

Handling

Format: Lyophilized

Reconstitution: Lyophilized powder. Add distilled water for a 1 mg/mL concentration of TMC2 antibody in PBS

Concentration: Lot specific

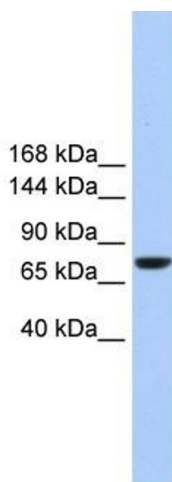
Buffer: PBS

Handling Advice: Avoid repeated freeze/thaw cycles.
Dilute only prior to immediate use.

Storage: 4 °C/-20 °C

Storage Comment: Store at 2-8 °C for short periods. For longer periods of storage, store at -20 °C.

Images



Western Blotting

Image 1. TMC2 antibody used at 1 ug/ml to detect target protein.