

Datasheet for ABIN634900 **anti-ATP2B3 antibody (N-Term)**



[Go to Product page](#)

1 Image

Overview

Quantity:	100 µL
Target:	ATP2B3
Binding Specificity:	N-Term
Reactivity:	Human, Mouse, Rat
Host:	Rabbit
Clonality:	Polyclonal
Conjugate:	This ATP2B3 antibody is un-conjugated
Application:	Western Blotting (WB)

Product Details

Immunogen:	ATP2 B3 antibody was raised using the N terminal of ATP2 3 corresponding to a region with amino acids GDMANSSIEFHPKPQQQRDVPQAGGFGCTLAELRTLMELRGAEALQKIEE
Specificity:	ATP2 B3 antibody was raised against the N terminal of ATP2 3
Purification:	Affinity purified

Target Details

Target:	ATP2B3
Alternative Name:	ATP2B3 (ATP2B3 Products)
Background:	ATP2B3 gene belongs to the family of P-type primary ion transport ATPases characterized by the formation of an aspartyl phosphate intermediate during the reaction cycle. These enzymes remove bivalent calcium ions from eukaryotic cells against very large concentration gradients

Target Details

and play a critical role in intracellular calcium homeostasis.

Molecular Weight: 134 kDa (MW of target protein)

Pathways: [Ribonucleoside Biosynthetic Process](#)

Application Details

Application Notes: WB: 1 µg/mL
Optimal conditions should be determined by the investigator.

Comment: ATP2B3 Blocking Peptide, catalog no. 33R-3204, is also available for use as a blocking control in assays to test for specificity of this ATP2B3 antibody

Restrictions: For Research Use only

Handling

Format: Lyophilized

Reconstitution: Lyophilized powder. Add distilled water for a 1 mg/mL concentration of ATP0 3 antibody in PBS

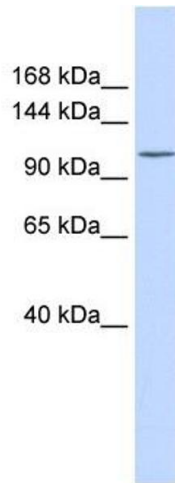
Concentration: Lot specific

Buffer: PBS

Handling Advice: Avoid repeated freeze/thaw cycles.
Dilute only prior to immediate use.

Storage: 4 °C/-20 °C

Storage Comment: Store at 2-8 °C for short periods. For longer periods of storage, store at -20 °C.



Western Blotting

Image 1. ATP2B3 antibody used at 1 ug/ml to detect target protein.