

## Datasheet for ABIN634911 **anti-CMTM2 antibody (N-Term)**



[Go to Product page](#)

### 1 Image

#### Overview

Quantity:	100 µL
Target:	CMTM2
Binding Specificity:	N-Term
Reactivity:	Human
Host:	Rabbit
Clonality:	Polyclonal
Conjugate:	This CMTM2 antibody is un-conjugated
Application:	Western Blotting (WB)

#### Product Details

Immunogen:	CMTM2 antibody was raised using the N terminal of CMTM2 corresponding to a region with amino acids DKPQKAVQDHKEPSDKPQKAVQPKHEVGTTRRGRRYRWELKDSNKEFWLL
Specificity:	CMTM2 antibody was raised against the N terminal of CMTM2
Purification:	Affinity purified

#### Target Details

Target:	CMTM2
Alternative Name:	CMTM2 ( <a href="#">CMTM2 Products</a> )
Background:	CMTM2 belongs to the chemokine-like factor superfamily, a novel family that links the chemokine and the transmembrane 4 superfamilies of signaling molecules. The protein may play an important role in testicular development. This gene belongs to the chemokine-like factor

## Target Details

---

geneuperfamily, a novel family that links the chemokine and the transmembrane 4 superfamilies of signaling molecules. The protein encoded by this gene may play an important role in testicular development.

Molecular Weight: 27 kDa (MW of target protein)

## Application Details

---

Application Notes: WB: 1 µg/mL  
Optimal conditions should be determined by the investigator.

Comment: CMTM2 Blocking Peptide, catalog no. 33R-2029, is also available for use as a blocking control in assays to test for specificity of this CMTM2 antibody

Restrictions: For Research Use only

## Handling

---

Format: Lyophilized

Reconstitution: Lyophilized powder. Add distilled water for a 1 mg/mL concentration of CMTM2 antibody in PBS

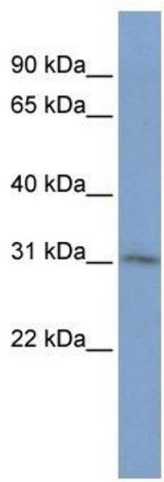
Concentration: Lot specific

Buffer: PBS

Handling Advice: Avoid repeated freeze/thaw cycles.  
Dilute only prior to immediate use.

Storage: 4 °C/-20 °C

Storage Comment: Store at 2-8 °C for short periods. For longer periods of storage, store at -20 °C.



### Western Blotting

**Image 1.** CMTM2 antibody used at 1 ug/ml to detect target protein.