

Datasheet for ABIN634922
anti-Surfeit 4 antibody (N-Term)



[Go to Product page](#)

1 Image

Overview

Quantity:	100 µL
Target:	Surfeit 4 (SURF4)
Binding Specificity:	N-Term
Reactivity:	Mouse, Human, Rat
Host:	Rabbit
Clonality:	Polyclonal
Conjugate:	This Surfeit 4 antibody is un-conjugated
Application:	Western Blotting (WB)

Product Details

Immunogen:	SURF4 antibody was raised using the N terminal of SURF4 corresponding to a region with amino acids GQNDLMGTAEDFADQFLRVTKQYLPHVARLCLISTFLEDGIRMWFQWSEQ
Specificity:	SURF4 antibody was raised against the N terminal of SURF4
Purification:	Affinity purified

Target Details

Target:	Surfeit 4 (SURF4)
Alternative Name:	SURF4 (SURF4 Products)
Background:	SURF4 is a conserved integral membrane protein containing multiple putative transmembrane regions. In eukaryotic cells, protein transport between the endoplasmic reticulum and Golgi compartments is mediated in part by non-clathrin-coated vesicular coat proteins (COPs). The

Target Details

specific function of this protein has not been determined but its yeast homolog is directly required for packaging glycosylated pro-alpha-factor into COPII vesicles.

Molecular Weight: 30 kDa (MW of target protein)

Application Details

Application Notes: WB: 1 µg/mL
Optimal conditions should be determined by the investigator.

Comment: SURF4 Blocking Peptide, catalog no. 33R-3504, is also available for use as a blocking control in assays to test for specificity of this SURF4 antibody

Restrictions: For Research Use only

Handling

Format: Lyophilized

Reconstitution: Lyophilized powder. Add distilled water for a 1 mg/mL concentration of SURF4 antibody in PBS

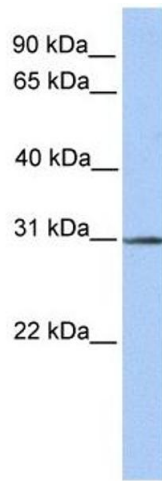
Concentration: Lot specific

Buffer: PBS

Handling Advice: Avoid repeated freeze/thaw cycles.
Dilute only prior to immediate use.

Storage: 4 °C/-20 °C

Storage Comment: Store at 2-8 °C for short periods. For longer periods of storage, store at -20 °C.



Western Blotting

Image 1. SURF4 antibody used at 1 ug/ml to detect target protein.