

Datasheet for ABIN634928  
**anti-Kallikrein 5 antibody (N-Term)**



[Go to Product page](#)

1 Image

## Overview

Quantity:	100 µL
Target:	Kallikrein 5 (KLK5)
Binding Specificity:	N-Term
Reactivity:	Human
Host:	Rabbit
Clonality:	Polyclonal
Conjugate:	This Kallikrein 5 antibody is un-conjugated
Application:	Western Blotting (WB)

## Product Details

Immunogen:	KLK5 antibody was raised using the N terminal of KLK5 corresponding to a region with amino acids CDHPSNTVPSGSNQLGAGAGEDARSDDSSSRIINGSDCDMHTQPWQAAL
Specificity:	KLK5 antibody was raised against the N terminal of KLK5
Purification:	Affinity purified

## Target Details

Target:	Kallikrein 5 (KLK5)
Alternative Name:	KLK5 ( <a href="#">KLK5 Products</a> )
Background:	Kallikreins are a subgroup of serine proteases having diverse physiological functions. Growing evidence suggests that many kallikreins are implicated in carcinogenesis and some have potential as novel cancer and other disease biomarkers.

## Target Details

Molecular Weight:	25 kDa (MW of target protein)
Pathways:	<a href="#">Complement System, Regulation of G-Protein Coupled Receptor Protein Signaling</a>

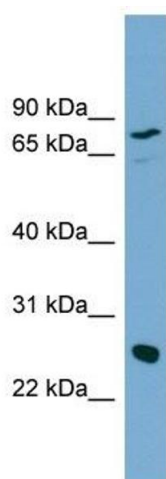
## Application Details

Application Notes:	WB: 1 µg/mL Optimal conditions should be determined by the investigator.
Comment:	KLK5 Blocking Peptide, catalog no. 33R-1662, is also available for use as a blocking control in assays to test for specificity of this KLK5 antibody
Restrictions:	For Research Use only

## Handling

Format:	Lyophilized
Reconstitution:	Lyophilized powder. Add distilled water for a 1 mg/mL concentration of KLK5 antibody in PBS
Concentration:	Lot specific
Buffer:	PBS
Handling Advice:	Avoid repeated freeze/thaw cycles. Dilute only prior to immediate use.
Storage:	4 °C/-20 °C
Storage Comment:	Store at 2-8 °C for short periods. For longer periods of storage, store at -20 °C.

## Images



### Western Blotting

**Image 1.** KLK5 antibody used at 1 ug/ml to detect target protein.