

Datasheet for ABIN634931
anti-MMP23B antibody (N-Term)



[Go to Product page](#)

1 Image

Overview

Quantity:	100 µL
Target:	MMP23B
Binding Specificity:	N-Term
Reactivity:	Human, Dog
Host:	Rabbit
Clonality:	Polyclonal
Conjugate:	This MMP23B antibody is un-conjugated
Application:	Western Blotting (WB)

Product Details

Immunogen:	MMP23 B antibody was raised using the N terminal of MMP23 corresponding to a region with amino acids ILSFPRNLLSPRETRRALAAAFRMWSDVSPFSFREVAPEQPSDLRIGFYF
Specificity:	MMP23 B antibody was raised against the N terminal of MMP23
Purification:	Affinity purified

Target Details

Target:	MMP23B
Alternative Name:	MMP23B (MMP23B Products)
Background:	MMP23B is a member of the matrix metalloproteinase (MMP) family, and it is part of a duplicated region of chromosome 1p36.3. Proteins of the matrix metalloproteinase (MMP) family are involved in the Breakdown of extracellular matrix in normal physiological processes,

Target Details

such as embryonic development, reproduction, and tissue remodeling, as well as in disease processes, such as arthritis and metastasis.

Molecular Weight: 36 kDa (MW of target protein)

Application Details

Application Notes: WB: 1 µg/mL
Optimal conditions should be determined by the investigator.

Comment: MMP23B Blocking Peptide, catalog no. 33R-4060, is also available for use as a blocking control in assays to test for specificity of this MMP23B antibody

Restrictions: For Research Use only

Handling

Format: Lyophilized

Reconstitution: Lyophilized powder. Add distilled water for a 1 mg/mL concentration of MMP20 antibody in PBS

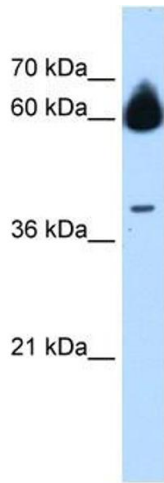
Concentration: Lot specific

Buffer: PBS

Handling Advice: Avoid repeated freeze/thaw cycles.
Dilute only prior to immediate use.

Storage: 4 °C/-20 °C

Storage Comment: Store at 2-8 °C for short periods. For longer periods of storage, store at -20 °C.



Western Blotting

Image 1. MMP23B antibody used at 1 ug/ml to detect target protein.