

Datasheet for ABIN634940  
**anti-POMT2 antibody (Middle Region)**



[Go to Product page](#)

1 Image

## Overview

|                      |                                      |
|----------------------|--------------------------------------|
| Quantity:            | 100 µL                               |
| Target:              | POMT2                                |
| Binding Specificity: | Middle Region                        |
| Reactivity:          | Human, Mouse, Rat                    |
| Host:                | Rabbit                               |
| Clonality:           | Polyclonal                           |
| Conjugate:           | This POMT2 antibody is un-conjugated |
| Application:         | Western Blotting (WB)                |

## Product Details

|               |  |
|---------------|--|
| Immunogen:    | POMT2 antibody was raised using the middle region of POMT2 corresponding to a region with amino acids RKHYQVTGYGINGTGDSNDFWRIEVVNRKFGNRIKVLRSRIRFIHLVTGC |
| Specificity:  | POMT2 antibody was raised against the middle region of POMT2   |
| Purification: | Affinity purified  |

## Target Details

|                   |   |
|-------------------|---|
| Target:           | POMT2   |
| Alternative Name: | POMT2 ( <a href="#">POMT2 Products</a> )  |
| Background:       | POMT2 encodes an integral membrane protein of the endoplasmic reticulum (ER) that shares significant sequence similarity with a family of protein O-mannosyltransferases of <i>S.cerevisiae</i> . |

## Target Details

---

Molecular Weight: 84 kDa (MW of target protein)

## Application Details

---

Application Notes: WB: 1 µg/mL  
Optimal conditions should be determined by the investigator.

Comment: POMT2 Blocking Peptide, catalog no. 33R-7995, is also available for use as a blocking control in assays to test for specificity of this POMT2 antibody

Restrictions: For Research Use only

## Handling

---

Format: Lyophilized

Reconstitution: Lyophilized powder. Add distilled water for a 1 mg/mL concentration of POMT2 antibody in PBS

Concentration: Lot specific

Buffer: PBS

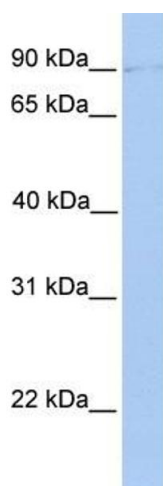
Handling Advice: Avoid repeated freeze/thaw cycles.  
Dilute only prior to immediate use.

Storage: 4 °C/-20 °C

Storage Comment: Store at 2-8 °C for short periods. For longer periods of storage, store at -20 °C.

## Images

---



### Western Blotting

**Image 1.** POMT2 antibody used at 1 ug/ml to detect target protein.