

Datasheet for ABIN634943
anti-IMPAD1 antibody (N-Term)



[Go to Product page](#)

1 Image

Overview

Quantity:	100 µL
Target:	IMPAD1
Binding Specificity:	N-Term
Reactivity:	Human, Rat
Host:	Rabbit
Clonality:	Polyclonal
Conjugate:	This IMPAD1 antibody is un-conjugated
Application:	Western Blotting (WB)

Product Details

Immunogen:	IMPAD1 antibody was raised using the N terminal of IMPAD1 corresponding to a region with amino acids VLA AVRGGDEVRRVRESNVLHEKSKGKTREGAEDKMTSGDVLSNRKMFYL
Specificity:	IMPAD1 antibody was raised against the N terminal of IMPAD1
Purification:	Affinity purified

Target Details

Target:	IMPAD1
Alternative Name:	IMPAD1 (IMPAD1 Products)
Background:	The function of IMPAD protein is not widely studied, and is yet to be elucidated fully.
Molecular Weight:	39 kDa (MW of target protein)

Target Details

Pathways: [Glycosaminoglycan Metabolic Process](#)

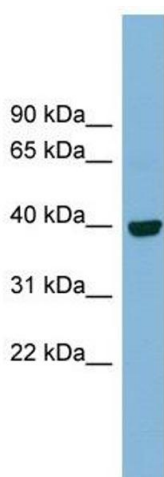
Application Details

Application Notes:	WB: 1 µg/mL Optimal conditions should be determined by the investigator.
Comment:	IMPAD1 Blocking Peptide, catalog no. 33R-9642, is also available for use as a blocking control in assays to test for specificity of this IMPAD1 antibody
Restrictions:	For Research Use only

Handling

Format:	Lyophilized
Reconstitution:	Lyophilized powder. Add distilled water for a 1 mg/mL concentration of IMPAD1 antibody in PBS
Concentration:	Lot specific
Buffer:	PBS
Handling Advice:	Avoid repeated freeze/thaw cycles. Dilute only prior to immediate use.
Storage:	4 °C/-20 °C
Storage Comment:	Store at 2-8 °C for short periods. For longer periods of storage, store at -20 °C.

Images



Western Blotting

Image 1. IMPAD1 antibody used at 1 ug/ml to detect target protein.