

Datasheet for ABIN634944
anti-TMEM30A antibody (N-Term)



[Go to Product page](#)

3 Images

Overview

Quantity:	100 µL
Target:	TMEM30A
Binding Specificity:	N-Term
Reactivity:	Mouse, Rat, Human, Zebrafish (Danio rerio), Dog
Host:	Rabbit
Clonality:	Polyclonal
Conjugate:	This TMEM30A antibody is un-conjugated
Application:	Western Blotting (WB), Immunohistochemistry (IHC)

Product Details

Immunogen:	TMEM30 A antibody was raised using the N terminal of TMEM30 corresponding to a region with amino acids FTLEKSFEGNVFMYGSLNMFYQNHRRYVKSRDDSQLNGDSSALLNPSKEC
Specificity:	TMEM30 A antibody was raised against the N terminal of TMEM30
Purification:	Affinity purified

Target Details

Target:	TMEM30A
Alternative Name:	TMEM30A (TMEM30A Products)
Background:	The function of TMEM30A protein is not widely studied, and is yet to be elucidated fully.
Molecular Weight:	41 kDa (MW of target protein)

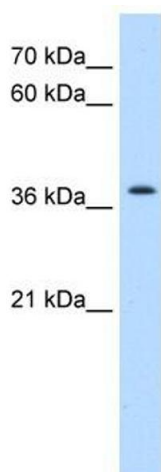
Application Details

Application Notes:	WB: 0.25 µg/mL, IHC: 4-8 µg/mL Optimal conditions should be determined by the investigator.
Comment:	TMEM30A Blocking Peptide, catalog no. 33R-3094, is also available for use as a blocking control in assays to test for specificity of this TMEM30A antibody
Restrictions:	For Research Use only

Handling

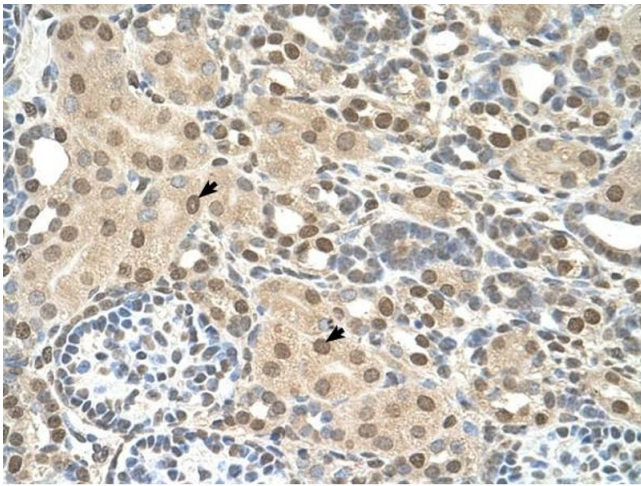
Format:	Lyophilized
Reconstitution:	Lyophilized powder. Add distilled water for a 1 mg/mL concentration of TMEM30 antibody in PBS
Concentration:	Lot specific
Buffer:	PBS
Handling Advice:	Avoid repeated freeze/thaw cycles. Dilute only prior to immediate use.
Storage:	4 °C/-20 °C
Storage Comment:	Store at 2-8 °C for short periods. For longer periods of storage, store at -20 °C.

Images



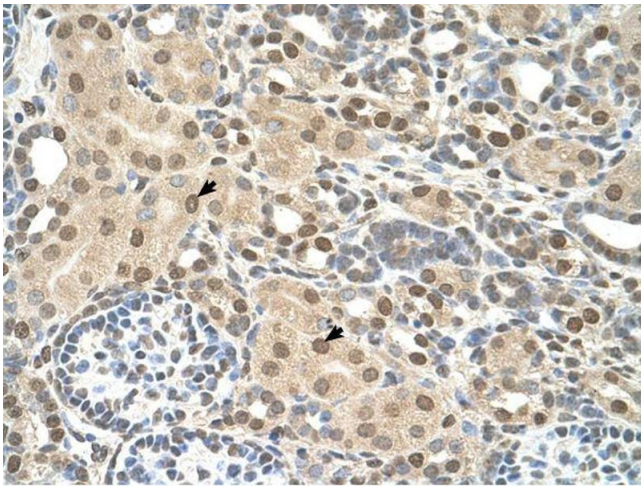
Western Blotting

Image 1. TMEM30A antibody used at 0.25 µg/ml to detect target protein.



Immunohistochemistry

Image 2. TMEM30A antibody was used for immunohistochemistry at a concentration of 4-8 ug/ml to stain Epithelial cells of renal tubule (arrows) in Human Kidney. Magnification is at 400X



Immunohistochemistry

Image 3. TMEM30A antibody was used for immunohistochemistry at a concentration of 4-8 ug/ml. Magnification is at 400X