

Datasheet for ABIN634947
anti-POPDC3 antibody (C-Term)



[Go to Product page](#)

1 Image

Overview

Quantity:	100 µL
Target:	POPDC3
Binding Specificity:	C-Term
Reactivity:	Human, Mouse, Rat
Host:	Rabbit
Clonality:	Polyclonal
Conjugate:	This POPDC3 antibody is un-conjugated
Application:	Western Blotting (WB)

Product Details

Immunogen:	POPDC3 antibody was raised using the C terminal of POPDC3 corresponding to a region with amino acids YLLFAQHRYISRLFSVLIGSDIADKLYALNDRVYIGKRYHYDIRLPNFYQ
Specificity:	POPDC3 antibody was raised against the C terminal of POPDC3
Purification:	Affinity purified

Target Details

Target:	POPDC3
Alternative Name:	POPDC3 (POPDC3 Products)
Background:	POPDC3 is a member of the POP family of proteins containing three putative transmembrane domains. The protein is expressed in cardiac and skeletal muscle and may play an important role in these tissues during development.

Target Details

Molecular Weight: 34 kDa (MW of target protein)

Application Details

Application Notes: WB: 1 µg/mL
Optimal conditions should be determined by the investigator.

Comment: POPDC3 Blocking Peptide, catalog no. 33R-10174, is also available for use as a blocking control in assays to test for specificity of this POPDC3 antibody

Restrictions: For Research Use only

Handling

Format: Lyophilized

Reconstitution: Lyophilized powder. Add distilled water for a 1 mg/mL concentration of POPDC3 antibody in PBS

Concentration: Lot specific

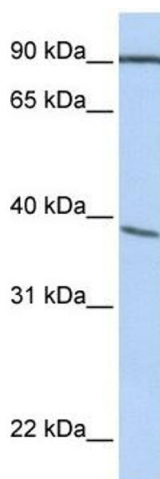
Buffer: PBS

Handling Advice: Avoid repeated freeze/thaw cycles.
Dilute only prior to immediate use.

Storage: 4 °C/-20 °C

Storage Comment: Store at 2-8 °C for short periods. For longer periods of storage, store at -20 °C.

Images



Western Blotting

Image 1. POPDC3 antibody used at 1 µg/ml to detect target protein.