

Datasheet for ABIN634950
anti-ABHD13 antibody (C-Term)



[Go to Product page](#)

1 Image

Overview

Quantity:	100 µL
Target:	ABHD13
Binding Specificity:	C-Term
Reactivity:	Human, Mouse, Rat
Host:	Rabbit
Clonality:	Polyclonal
Conjugate:	This ABHD13 antibody is un-conjugated
Application:	Western Blotting (WB)

Product Details

Immunogen:	ABHD13 antibody was raised using the C terminal of ABHD13 corresponding to a region with amino acids LAIFPDGTHNDTWQCQGYFTALEQFIKEVVKSHSPEEMAKTSSNVII
Specificity:	ABHD13 antibody was raised against the C terminal of ABHD13
Purification:	Affinity purified

Target Details

Target:	ABHD13
Alternative Name:	ABHD13 (ABHD13 Products)
Background:	ABHD13 is a single-pass type II membrane protein. It belongs to the serine esterase family. The exact function of ABHD13 remains unknown.

Target Details

Molecular Weight: 38 kDa (MW of target protein)

Application Details

Application Notes: WB: 1 µg/mL
Optimal conditions should be determined by the investigator.

Comment: ABHD13 Blocking Peptide, catalog no. 33R-4775, is also available for use as a blocking control in assays to test for specificity of this ABHD13 antibody

Restrictions: For Research Use only

Handling

Format: Lyophilized

Reconstitution: Lyophilized powder. Add distilled water for a 1 mg/mL concentration of ABHD13 antibody in PBS

Concentration: Lot specific

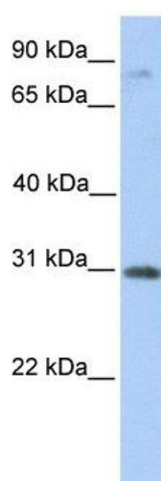
Buffer: PBS

Handling Advice: Avoid repeated freeze/thaw cycles.
Dilute only prior to immediate use.

Storage: 4 °C/-20 °C

Storage Comment: Store at 2-8 °C for short periods. For longer periods of storage, store at -20 °C.

Images



Western Blotting

Image 1. ABHD13 antibody used at 1 ug/ml to detect target protein.