

Datasheet for ABIN634955
anti-ENTPD8 antibody (N-Term)



[Go to Product page](#)

1 Image

Overview

Quantity:	100 µL
Target:	ENTPD8
Binding Specificity:	N-Term
Reactivity:	Human
Host:	Rabbit
Clonality:	Polyclonal
Conjugate:	This ENTPD8 antibody is un-conjugated
Application:	Western Blotting (WB)

Product Details

Immunogen:	ENTPD8 antibody was raised using the N terminal of ENTPD8 corresponding to a region with amino acids IPEAQHRKTPTFLGATAGMRLLSRKNSSQARDIFAAVTQVLGRSPVDFWG
Specificity:	ENTPD8 antibody was raised against the N terminal of ENTPD8
Purification:	Affinity purified

Target Details

Target:	ENTPD8
Alternative Name:	ENTPD8 (ENTPD8 Products)
Background:	ENTPD8 is the canalicular ectonucleoside NTPDase responsible for the main hepatic NTPDase activity. Ectonucleoside NTPDases catalyze the hydrolysis of gamma- and beta-phosphate residues of nucleotides, playing a central role in concentration of extracellular nucleotides. It

Target Details

has activity toward ATP, ADP, UTP and UDP, but not toward AMP.

Molecular Weight: 54 kDa (MW of target protein)

Application Details

Application Notes: WB: 1 µg/mL
Optimal conditions should be determined by the investigator.

Comment: ENTPD8 Blocking Peptide, catalog no. 33R-4087, is also available for use as a blocking control in assays to test for specificity of this ENTPD8 antibody

Restrictions: For Research Use only

Handling

Format: Lyophilized

Reconstitution: Lyophilized powder. Add distilled water for a 1 mg/mL concentration of ENTPD8 antibody in PBS

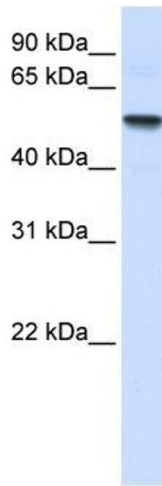
Concentration: Lot specific

Buffer: PBS

Handling Advice: Avoid repeated freeze/thaw cycles.
Dilute only prior to immediate use.

Storage: 4 °C/-20 °C

Storage Comment: Store at 2-8 °C for short periods. For longer periods of storage, store at -20 °C.



Western Blotting

Image 1. ENTPD8 antibody used at 1 ug/ml to detect target protein.