

Datasheet for ABIN634957  
**anti-OMG antibody (N-Term)**



[Go to Product page](#)

1 Image

## Overview

Quantity:	100 µL
Target:	OMG
Binding Specificity:	N-Term
Reactivity:	Human
Host:	Rabbit
Clonality:	Polyclonal
Conjugate:	This OMG antibody is un-conjugated
Application:	Western Blotting (WB)

## Product Details

Immunogen:	OMG antibody was raised using the N terminal of OMG corresponding to a region with amino acids ANNNIKLLDKSDTAYQWNLKYLDVSKNMLEKVVLIKNTLRSLVNLSSN
Specificity:	OMG antibody was raised against the N terminal of OMG
Purification:	Affinity purified

## Target Details

Target:	OMG
Alternative Name:	OMG ( <a href="#">OMG Products</a> )
Background:	OMG is a cell adhesion molecule contributing to the interactive process required for myelination in the central nervous system.

## Target Details

Molecular Weight:	49 kDa (MW of target protein)
Pathways:	<a href="#">Neurotrophin Signaling Pathway</a> , <a href="#">Regulation of Cell Size</a>

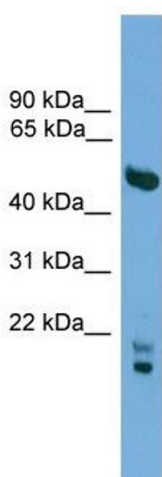
## Application Details

Application Notes:	WB: 1 µg/mL Optimal conditions should be determined by the investigator.
Comment:	OMG Blocking Peptide, catalog no. 33R-1403, is also available for use as a blocking control in assays to test for specificity of this OMG antibody
Restrictions:	For Research Use only

## Handling

Format:	Lyophilized
Reconstitution:	Lyophilized powder. Add distilled water for a 1 mg/mL concentration of OMG antibody in PBS
Concentration:	Lot specific
Buffer:	PBS
Handling Advice:	Avoid repeated freeze/thaw cycles. Dilute only prior to immediate use.
Storage:	4 °C/-20 °C
Storage Comment:	Store at 2-8 °C for short periods. For longer periods of storage, store at -20 °C.

## Images



### Western Blotting

**Image 1.** OMG antibody used at 1 ug/ml to detect target protein.