

Datasheet for ABIN634964
anti-LRRC24 antibody (N-Term)



[Go to Product page](#)

1 Image

Overview

Quantity:	100 µL
Target:	LRRC24
Binding Specificity:	N-Term
Reactivity:	Mouse, Human
Host:	Rabbit
Clonality:	Polyclonal
Conjugate:	This LRRC24 antibody is un-conjugated
Application:	Western Blotting (WB)

Product Details

Immunogen:	LRRC24 antibody was raised using the N terminal of LRRC24 corresponding to a region with amino acids HLPRLQELHLQENSIELLEDDQALAGLSSLALLDLNRNQLGTISREALQPL
Specificity:	LRRC24 antibody was raised against the N terminal of LRRC24
Purification:	Affinity purified

Target Details

Target:	LRRC24
Alternative Name:	LRRC24 (LRRC24 Products)
Background:	LRRC24 contains 1 Ig-like C2-type (immunoglobulin-like) domain and 7 LRR (leucine-rich) repeats. It is a single-pass membrane protein. The function of the LRRC24 protein remains unknown.

Target Details

Molecular Weight: 55 kDa (MW of target protein)

Application Details

Application Notes: WB: 1 µg/mL
Optimal conditions should be determined by the investigator.

Comment: LRRC24 Blocking Peptide, catalog no. 33R-3781, is also available for use as a blocking control in assays to test for specificity of this LRRC24 antibody

Restrictions: For Research Use only

Handling

Format: Lyophilized

Reconstitution: Lyophilized powder. Add distilled water for a 1 mg/mL concentration of LRRC24 antibody in PBS

Concentration: Lot specific

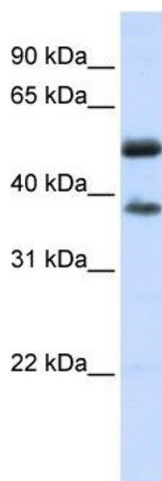
Buffer: PBS

Handling Advice: Avoid repeated freeze/thaw cycles.
Dilute only prior to immediate use.

Storage: 4 °C/-20 °C

Storage Comment: Store at 2-8 °C for short periods. For longer periods of storage, store at -20 °C.

Images



Western Blotting

Image 1. LRRC24 antibody used at 1 ug/ml to detect target protein.