

Datasheet for ABIN634967  
**anti-MARVELD3 antibody (Middle Region)**



[Go to Product page](#)

3 Images

## Overview

Quantity:	100 µL
Target:	MARVELD3
Binding Specificity:	Middle Region
Reactivity:	Human, Mouse, Dog
Host:	Rabbit
Clonality:	Polyclonal
Conjugate:	This MARVELD3 antibody is un-conjugated
Application:	Western Blotting (WB), Immunohistochemistry (IHC)

## Product Details

Immunogen:	MARVELD3 antibody was raised using the middle region of MARVELD3 corresponding to a region with amino acids SYFVLGFSASFSSGGGFGNNYSPFEGTELEQVRQLDQQYTILRSPLIY
Specificity:	MARVELD3 antibody was raised against the middle region of MARVELD3
Purification:	Affinity purified

## Target Details

Target:	MARVELD3
Alternative Name:	MARVELD3 ( <a href="#">MARVELD3 Products</a> )
Background:	MARVELD3 is involved in membrane apposition and fusion events.
Molecular Weight:	46 kDa (MW of target protein)

## Target Details

Pathways: [Cell-Cell Junction Organization](#)

## Application Details

Application Notes: WB: 0.25 µg/mL, IHC: 4-8 µg/mL  
Optimal conditions should be determined by the investigator.

Comment: MARVELD3 Blocking Peptide, catalog no. 33R-8948, is also available for use as a blocking control in assays to test for specificity of this MARVELD3 antibody

Restrictions: For Research Use only

## Handling

Format: Lyophilized

Reconstitution: Lyophilized powder. Add distilled water for a 1 mg/mL concentration of MARVELD3 antibody in PBS

Concentration: Lot specific

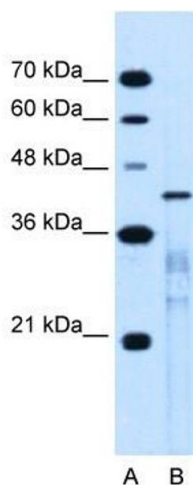
Buffer: PBS

Handling Advice: Avoid repeated freeze/thaw cycles.  
Dilute only prior to immediate use.

Storage: 4 °C/-20 °C

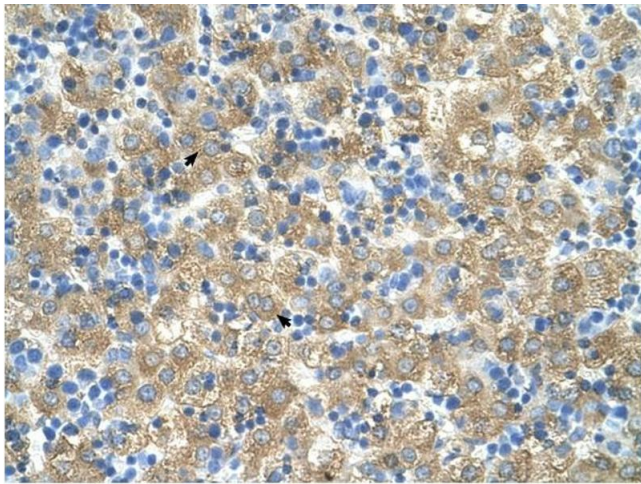
Storage Comment: Store at 2-8 °C for short periods. For longer periods of storage, store at -20 °C.

## Images



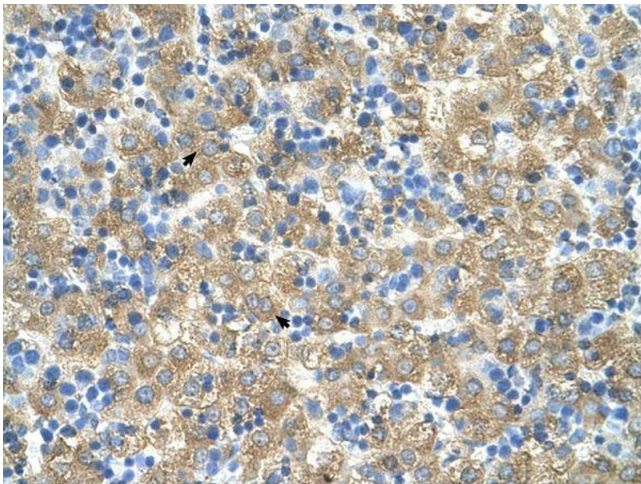
### Western Blotting

**Image 1.** MARVELD3 antibody used at 0.25 µg/ml to detect target protein.



#### Immunohistochemistry

**Image 2.** MARVELD3 antibody was used for immunohistochemistry at a concentration of 4-8 ug/ml to stain Hepatocytes (arrows) in Human Liver. Magnification is at 400X



#### Immunohistochemistry

**Image 3.** MARVELD3 antibody was used for immunohistochemistry at a concentration of 4-8 ug/ml. Magnification is at 400X