

Datasheet for ABIN634968
anti-TREML2 antibody (Middle Region)



[Go to Product page](#)

1 Image

Overview

Quantity:	100 µL
Target:	TREML2
Binding Specificity:	Middle Region
Reactivity:	Human
Host:	Rabbit
Clonality:	Polyclonal
Conjugate:	This TREML2 antibody is un-conjugated
Application:	Western Blotting (WB)

Product Details

Immunogen:	TREML2 antibody was raised using the middle region of TREML2 corresponding to a region with amino acids TGYSFTATSTTSQGPRRTMGSQLVTASPSNARDSSAGPESISTKSGDLST
Specificity:	TREML2 antibody was raised against the middle region of TREML2
Purification:	Affinity purified

Target Details

Target:	TREML2
Alternative Name:	TREML2 (TREML2 Products)
Background:	TREML2 is a single-pass type I membrane protein, and it contains 1 Ig-like V-type (immunoglobulin-like) domain. TREML2 is a cell surface receptor that may play a role in the innate and adaptive immune response. TREML2 is located in a gene cluster on chromosome 6

Target Details

with the single Ig variable (IgV) domain activating receptors TREM1 and TREM2, but it has distinct structural and functional properties.

Molecular Weight: 41 kDa (MW of target protein)

Application Details

Application Notes: WB: 1 µg/mL
Optimal conditions should be determined by the investigator.

Comment: TREML2 Blocking Peptide, catalog no. 33R-9100, is also available for use as a blocking control in assays to test for specificity of this TREML2 antibody

Restrictions: For Research Use only

Handling

Format: Lyophilized

Reconstitution: Lyophilized powder. Add distilled water for a 1 mg/mL concentration of TREML2 antibody in PBS

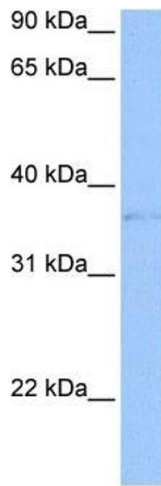
Concentration: Lot specific

Buffer: PBS

Handling Advice: Avoid repeated freeze/thaw cycles.
Dilute only prior to immediate use.

Storage: 4 °C/-20 °C

Storage Comment: Store at 2-8 °C for short periods. For longer periods of storage, store at -20 °C.



Western Blotting

Image 1. TREML2 antibody used at 1 ug/ml to detect target protein.